



## Owner's Manual



# AquaLink<sup>®</sup> RS

## OneTouch<sup>™</sup> Control Systems

For use with Pool/Spa Combination,  
Pool Only/Spa Only, and Dual Equipment  
AquaLink<sup>®</sup> RS Systems.

### **WARNING**

**FOR YOUR SAFETY** - This product must be installed and serviced by a professional pool/spa service technician. The procedures in this manual must be followed exactly. Failure to follow warning notices and instructions may result in property damage, serious injury, or death.

## Table of Contents

**NOTE** Some of the features described in this Manual DO NOT apply to all AquaLink® RS models.

|  |    |  |    |
|--|----|--|----|
| Section 1. Important Safety Instructions.....                      | 5  | Section 7. Using the System Setup Menu ..... | 23 |
| Section 2. Overview of the OneTouch™<br>Control Panel.....         | 7  | OneTouch Menu .....                          | 23 |
| Section 3. Using the Equipment On/Off<br>Menu.....                 | 8  | Label Auxiliary Menu .....                   | 24 |
| Equipment On/Off.....  | 8  | Boost Setup Menu .....                       | 24 |
| Filter Pump.....   | 8  | FlowLink Menu.....                           | 25 |
| Spa.....   | 9  | Freeze Protection Menu .....                 | 26 |
| Pool Heat.....   | 9  | Air Temperature Menu .....                   | 26 |
| Spa Heat .....   | 10 | Degrees C/F Menu .....                       | 27 |
| Solar Heat.....  | 10 | Daylight Savings Menu.....                   | 27 |
| Auxiliary Equipment.....   | 11 | Temp Calibration Menu .....                  | 27 |
| Heat Pump.....   | 11 | In Floor Cleaning Menu .....                 | 28 |
| Chiller.....   | 12 | Solar Priority/Heat Pump Menu.....           | 28 |
| Laminar Light Pulse Control.....                                   | 12 | Pump Lockout Menu.....                       | 28 |
| Set Light Colors.....  | 13 | Assign JVA Menu.....                         | 29 |
| Section 4. Using the Equipment On/Off<br>Model Specific Menus..... | 14 | Set Dimmers Menu.....                        | 29 |
| TEMP1 (Pool or Spa Only) .....                                     | 14 | Spa Side Switch Menu .....                   | 30 |
| TEMP2 (Pool or Spa Only) .....                                     | 14 | SpaLink Menu.....                            | 30 |
| Filter Pump (Dual Equipment).....                                  | 14 | Dusk Setup Menu .....                        | 31 |
| Spa (Dual Equipment) .....   | 15 | All Off Time Menu.....                       | 32 |
| Two Speed Operation.....   | 15 | Product Info Menu .....                      | 32 |
| Section 5. Using the OneTouch Menu .....                           | 16 | Clear Memory Menu .....                      | 32 |
| Section 6. Using the Help Menu .....                               | 17 | Set Color Lights Menu .....                  | 33 |
| Keys Menu .....  | 17 | Device Runtime Menu .....                    | 33 |
| Service Menu.....  | 17 | Heat Pump Menu.....                          | 33 |
| Diagnostics Menu.....  | 17 | Laminar Light Menu.....                      | 34 |
| Program Menu.....  | 18 | Section 8. Glossaries .....                  | 35 |
| Set Temperature Menu .....   | 19 | Section 9. OneTouch Menu Flow Chart.....     | 37 |
| Set Time Menu .....  | 20 | Warranty .....                               | 40 |
| AquaPure Menu.....   | 20 |  |    |
| Display Light Menu .....   | 20 |  |    |
| Lockout Menu .....   | 21 |  |    |
| Program Group Menu.....  | 21 |  |    |
| System Setup Menu.....   | 22 |  |    |
| Boost Menu .....   | 22 |  |    |

*This page intentionally left blank.*

## Section 1. Important Safety Instructions

### READ AND FOLLOW ALL INSTRUCTIONS

#### Lire la notice technique.

All electrical work must be performed by a licensed electrician and conform to all national, state, and local codes. When installing and using this electrical equipment, basic safety precautions should always be followed, including the following:

#### DANGER

To reduce the risk of injury, do not remove the suction fittings of your spa or hot tub. Never operate a spa or hot tub if the suction fittings are broken or missing. Never replace a suction fitting with one rated less than the flow rate marked on the equipment assembly.

#### WARNING

Prolonged immersion in hot water may induce hyperthermia. Hyperthermia occurs when the internal temperature of the body reaches a level several degrees above the normal body temperature of 98.6° F. The symptoms of hyperthermia include dizziness, fainting, drowsiness, lethargy, and an increase in the internal temperature of the body. The effects of hyperthermia include: 1) unawareness of impending danger; 2) failure to perceive heat; 3) failure to recognize the need to exit spa; 4) physical inability to exit spa; 5) fetal damage in pregnant women; 6) unconsciousness resulting in a danger of drowning.

#### WARNING

##### To Reduce the Risk of Injury -

- a) The water in a spa should never exceed 104°F (40°C). Water temperatures between 100°F (38°C) and 104°F (40°C) are considered safe for a healthy adult. Lower water temperatures are recommended for young children and when spa use exceeds 10 minutes.
- b) Since excessive water temperatures have a high potential for causing fetal damage during the early months of pregnancy, pregnant or possibly pregnant women should limit spa water temperatures to 100°F (38°C).
- c) Before entering a spa or hot tub, the user should measure the water temperature with an accurate thermometer since the tolerance of water temperature-regulating devices varies.
- d) The use of alcohol, drugs, or medication before or during spa or hot tub use may lead to unconsciousness with the possibility of drowning.
- e) Obese persons and persons with a history of heart disease, low or high blood pressure, circulatory system problems, or diabetes should consult a physician before using a spa.
- f) Persons using medication should consult a physician before using a spa or hot tub since some medication may induce drowsiness while other medication may affect heart rate, blood pressure, and circulation.

#### WARNING

**Risk of electric shock** - Install the power center at least five (5) feet (152.4cm) from the inside wall of the pool and/or hot tub using non-metallic plumbing. Canadian installations must be at least three (3) meters from the water.

Children should not use spas or hot tubs without adult supervision.

Do not use spas or hot tubs unless all suction guards are installed to prevent body and hair entrapment.

People using medications and/or having an adverse medical history should consult a physician before using a spa or hot tub.

#### AVERTISSEMENT

**Danger d'électrocution** - Les installations canadiennes doivent se trouver à au moins trois (3) mètres de l'eau.

Ne pas laisser les enfants utiliser une cuve de relaxation sans surveillance.

Pour éviter que les cheveux ou une partie du corps puissent être aspirés, ne pas utiliser une cuve de relaxation si les grilles de prise d'aspiration ne sont pas toutes en place.

Les personnes qui prennent des médicaments ou ont des problèmes de santé devraient consulter un médecin avant d'utiliser une cuve de relaxation.

**⚠ WARNING**

People with infectious diseases should not use a spa or hot tub.

To avoid injury, exercise care when entering or exiting the spa or hot tub.

Do not use drugs or alcohol before or during the use of a spa or hot tub to avoid unconsciousness and possible drowning.

Pregnant or possibly pregnant women should consult a physician before using a spa or hot tub.

Water temperature in excess of 100°F/38°C may be injurious to your health.

Before entering a spa or hot tub measure the water temperature with an accurate thermometer.

Do not use a spa or hot tub immediately following strenuous exercise.

Prolonged immersion in a spa or hot tub may be injurious to your health.

Do not permit any electric appliance (such as a light, telephone, radio, or television) within 5 feet (1.5 m) of a spa or hot tub.

The use of alcohol, drugs or medication can greatly increase the risk of fatal hyperthermia in hot tubs and spas.

Water temperature in excess of 100°F/38°C may be hazardous to your health.

**⚠ AVERTISSEMENT**

Les personnes atteintes de maladies infectieuses ne devraient pas utiliser une cuve de relaxation.

Pour éviter des blessures, user de prudence en entrant dans une cuve de relaxation et en sortant.

Pour éviter l'évanouissement et la noyade éventuelle, ne prendre ni drougue ni alcool avant d'utiliser une cuve de relaxation ni quand on s'y trouve.

Les femmes enceintes, que leur grossesse soit confirmée ou non, devraient consulter un médecin avant d'utiliser une cuve de relaxation.

Il peut être dangereux pour la santé de se plonger dans de l'eau à plus de 38°C/100°F.

Avant d'utiliser une cuve de relaxation mesurer la température de l'eau à l'aide d'un thermomètre précis.

Ne pas utiliser une cuve de relaxation immédiatement après un exercice fatigant.

L'utilisation prolongée d'une cuve de relaxation peut être dangereuse pur la santé.

Ne pas placer d'appareil électrique (luminaire, téléphone, radio, téléviseur, etc) à moins de 1.5m de cette cuve de relaxation.

La consommation d'alcool ou de drogue augmente considérablement les risques d'hyperthermie mortelle dans une cuve de relaxation.

Il peut être dangereux pour la santé de se plonger dans de l'eau à plus de 38°C/100°F.

**⚠ CAUTION**

A terminal bar marked "GROUND" is provided within the power center. To reduce the risk of electrical shock, connect this terminal bar to the grounding terminal of your electric service or supply panel with a continuous copper conductor having green insulation and one that is equivalent in size to the circuit conductors supplying this equipment, but no smaller than no. 12 AWG (3.3mm). In addition, a second wire connector should be bonded with a no. 8 AWG (4.115mm) copper wire to any metal ladders, water pipes, or other metal within five (5) feet (1.52m) of the tub.

**⚠ CAUTION**

A ground-fault circuit-interrupter must be provided if this device is used to control underwater lighting fixtures. The conductors on the load side of the ground-fault circuit-interrupter shall not occupy conduit, boxes, or enclosures containing other conductors unless the additional conductors are also protected by a ground-fault circuit-interrupter. Refer to local codes for complete details.

**⚠ CAUTION**

Control system is intended to control heaters with built-in high limit circuits only.



**Attention installer:** Install to provide drainage of compartment for electrical components.

**SAVE THESE INSTRUCTIONS**

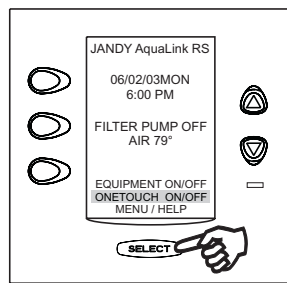
## Section 2. Overview of the OneTouch™ Control Panel

This document gives instructions for operating the Jandy AquaLink® RS OneTouch Indoor Control Panel. The instructions must be followed exactly. Read through the instructions completely before operating the equipment.

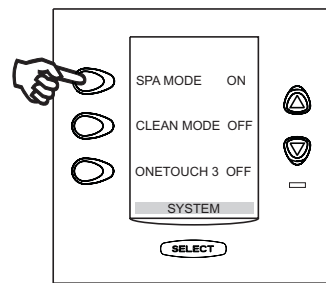
### 2.1 Basic Functions

The AquaLink® RS OneTouch™ can turn your pool/spa equipment on and off in any of the following three ways:

1. Activate the equipment manually through the EQUIPMENT ON/OFF menu.
2. Program the equipment to turn on and off at specific times. See page 18 for a detailed explanation of how to program equipment for automatic operation.
3. Use the OneTouch buttons to create scene settings with just "one touch" of a button. For example, you can program the spa heater to heat to 101 degrees, spa light on, jets on, water features on, and then name the result Romantic Scene.



Default screen 1

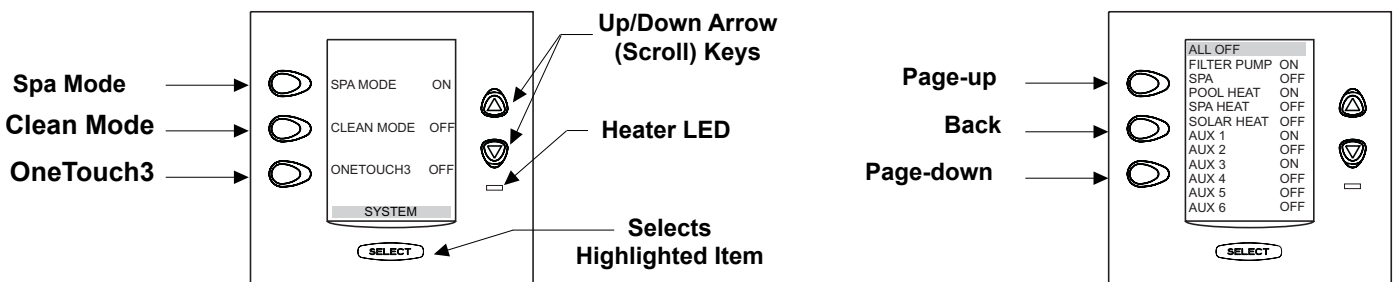


Default screen 2

**NOTE** The AquaLink® RS OneTouch™ has two default screens; the date/time/temp screen or the OneTouch quick operation screen. The OneTouch will return to the last screen used after a 30 second delay.

### 2.2 Using the Buttons

Use the buttons as explained in the diagram below. For an on-screen description of the buttons, select MENU/HELP, HELP, KEYS. When moving through the screens, you will have about 15 seconds before the controller will return to the previous screen. If you keep the Up or Down arrow button depressed, it will automatically step through the menu items in that direction.



### 2.3 Battery Back-Up

In the event of a power failure, Date and Time will be backed-up by the 9-volt battery located in the Power Center enclosure. All other programs and menu setups do not require battery to store information. To determine if battery is low, highlight MENU/HELP press SELECT, highlight HELP press SELECT, highlight DIAGNOSTICS and press SELECT.

## Section 3. Using the Equipment On/Off Menu

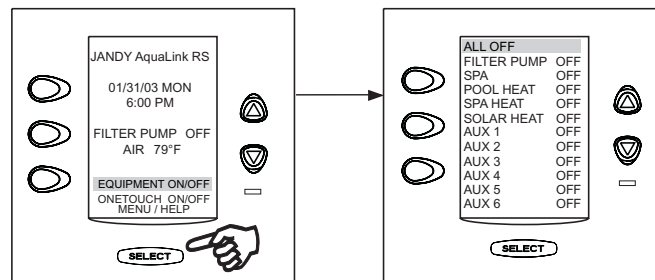
### Equipment On/Off

Use this menu to manually turn a piece of equipment on or off. The ALL OFF mode will turn off equipment that has been turned on by any means (manual or pre-programmed). This includes any of the heater enables that were on (unless in use by the Maintain function).

#### To use Equipment On/Off

1. Highlight EQUIPMENT ON/OFF and press SELECT. To highlight an item, use the UP/DOWN arrow keys. Use the SELECT button to turn the equipment on or off. Return to the main menu by using the BACK button, or use the UP/DOWN arrow keys to highlight another device.
2. Highlight ALL OFF and press SELECT. After using ALL OFF, return to the main menu by using the BACK button.

**NOTE** When a piece of equipment is on, the LCD Screen will switch between the main menu and an equipment status screen that tells you what equipment is on.



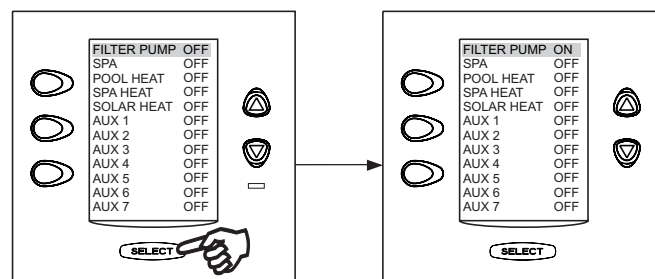
### Filter Pump

The FILTER PUMP selection turns the main filtration pump on or off for circulation to the pool. The filter pump also activates if the spa is turned on, if the pool cleaner is turned on, or if the spa spill-over effect is activated. The main filtration pump circulates the pool or spa water through the filter and heater. The pump must be on if you want to display the pool temperature, or if you want to heat the pool.

For 2-speed operation, see page 15.

#### To use Filter Pump

Highlight FILTER PUMP and press SELECT. Use the SELECT button to turn the equipment on or off.

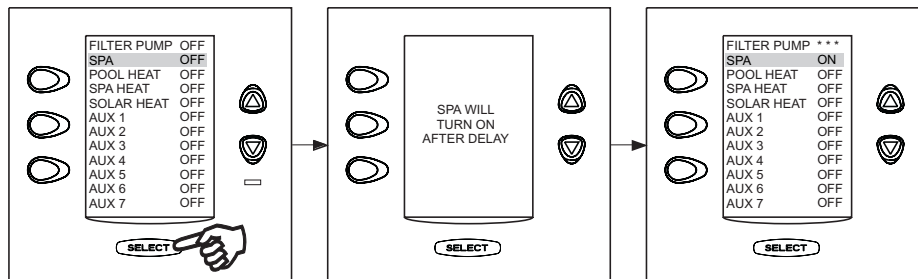


### Spa

The SPA mode switches water circulation from the pool to spa (pool/spa combination models only). Turning on the spa also activates the filter pump (after a delay for valve rotation) and deactivates the pool cleaner if it is on. The SPA mode must be on to display the spa temperature and/or to heat the spa. Activation takes place after a thirty second delay (while valves are turning).

#### To use Spa

Highlight SPA and press SELECT. Use the SELECT button to turn the spa on or off.

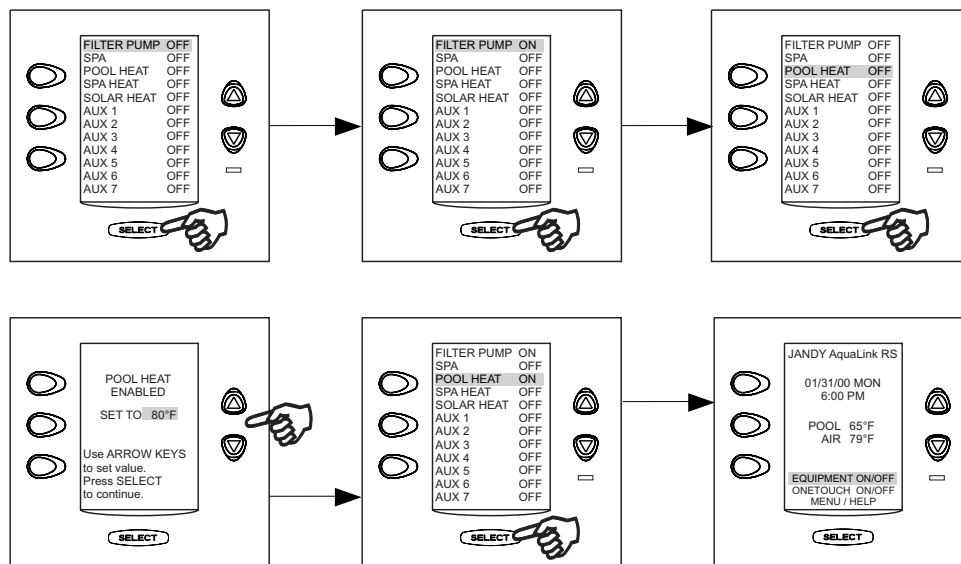


### Pool Heat

The POOL HEAT selection enables the heater for the pool. When the LED is green, the heater is enabled. When the LED is red, the heater is on and firing. It uses the setting from SET TEMP menu, or you can increase/decrease when enabling.

#### To use Pool Heat

Highlight FILTER PUMP and press SELECT. Highlight POOL HEAT and press SELECT. Use the UP/DOWN arrow keys to set the desired temperature and press SELECT.



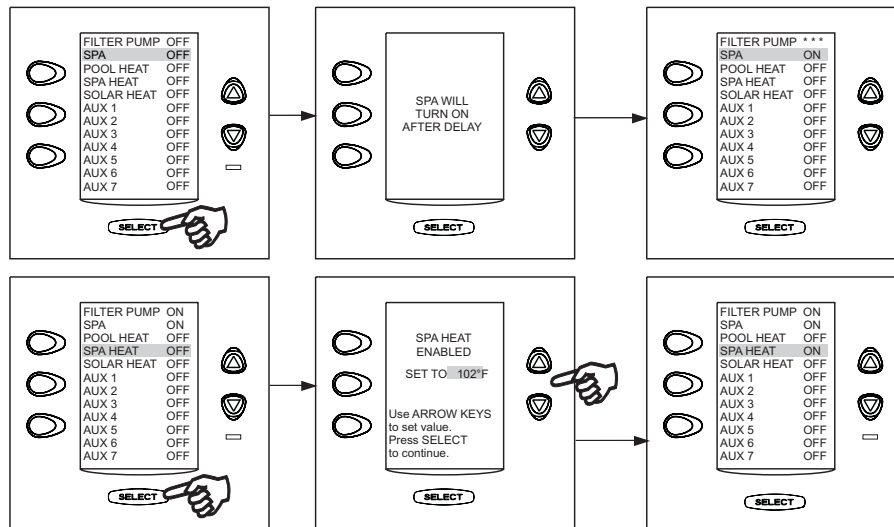


## Spa Heat

The SPA HEAT enables the heater for the spa. When the LED is green, the heater is enabled. When the LED is red, the heater is on and firing. It uses the settings from SET TEMP menu, or you can increase/decrease when enabling.

### To use Spa Heat

Highlight SPA and press SELECT. The spa will come on after a short delay. Highlight SPA HEAT and press SELECT. Use the UP/DOWN arrow keys to set the desired temperature and press SELECT.



## Solar Heat

The SOLAR HEAT selection controls solar heating. A solar heating system and optional solar sensor are required for SOLAR HEAT selection to operate.

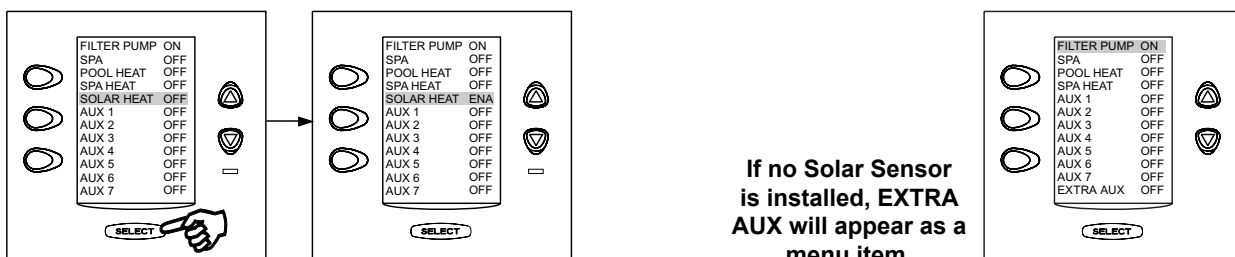
### To use Solar Heat

Highlight SOLAR HEAT and press SELECT. Use the SELECT button to turn SOLAR HEAT on or off.

**HEAT PUMP:** If a Heat Pump is properly connected to this system, HEAT PUMP will appear on the screen in place of SOLAR HEAT.

If a solar sensor is not installed, EXTRA AUX replaces SOLAR HEAT and may be used to control an auxiliary (see "Auxiliary Equipment" to turn on or off EXTRA AUX).

For solar heating to take place, the SOLAR HEAT (in EQUIPMENT ON/OFF) must be enabled, also the filter pump must be on. Solar temperature must be at least 5° F above the water temperature and the water must be cooler than the thermostat setting.

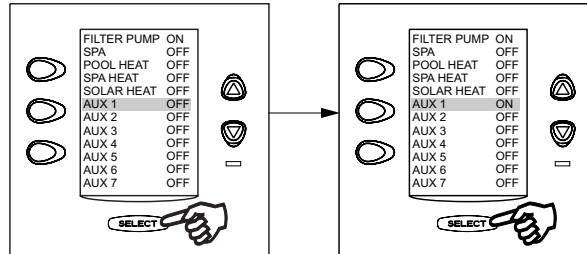


## Auxiliary Equipment

The AUX modes control each of the auxiliary devices plus an extra AUX. To assign a different name to an auxiliary device, use the SYSTEM SETUP and LABEL AUX menus.

### To turn an Auxiliary on or off

Highlight an AUX and press SELECT. Use the SELECT button to turn the equipment on or off.



## Heat Pump

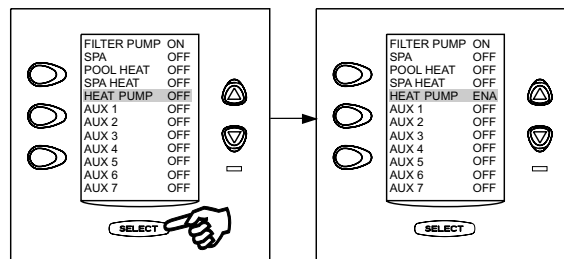
**NOTE** This equipment may not be part of your system. Please check with your installer.

The HEAT PUMP selection controls the heat pump operation. In order to use the heat pump, the filter pump must be turned on and the heat pump must be in HEAT MODE (see page 23, Using the System Setup Menu), and the switch on the heat pump on the equipment pad must also be set to HEAT MODE.

**NOTE** HEAT PUMP takes the place of EXTRA AUX or SOLAR HEAT. It is not possible to have any two of these on the EQUIPMENT ON/OFF menu at the same time.

### To use Heat Pump

Highlight HEAT PUMP and press SELECT. Press the SELECT button to enable/disable the HEAT PUMP. The HEAT PUMP uses the heater temperature set point.



## Chiller



**NOTE** This equipment may not be part of your system. Please check with your installer.

The CHILLER selection controls the chilling operation of the heat pump. In order to use the chiller, the filter pump must be turned on and the heat pump must be in CHILL MODE (see page 23, Using the System Setup Menu), and the switch on the heat pump on the equipment pad must also be set to CHILL MODE.

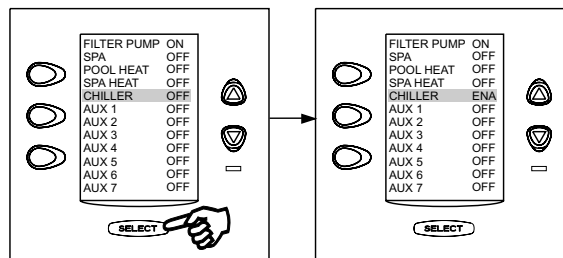
**NOTE** CHILLER takes the place of EXTRAUX or SOLAR HEAT. It is not possible to have any two of these on the EQUIPMENT ON/OFF menu at the same time.

### To use Chiller

Highlight CHILLER and press SELECT. Press the SELECT button to enable/disable the CHILLER. The CHILLER uses the desired chilling temperature set point. Press SELECT to accept the value.

#### Important Information on Chiller

You must manually change the setting at your heat pump from Heat to Chiller.



**NOTE** The system will force the Chiller set point to always be at least 5 degrees Fahrenheit higher than the Heater set point.

## Laminar Light Pulse Control



**NOTE** This equipment may not be part of your system. Please check with your installer.

The LAMINAR PULSE CONTROL menu is used to set the pulse rate of the Laminar Jets.

**NOTE** Prior to operating this feature, the Laminar Pulse Control must be labeled to an auxiliary (for example, AUX 2). See "Using System Setup - Label Aux Menu" to label the laminar pulse control to an auxiliary control.

### To use Laminar Light Pulse Control

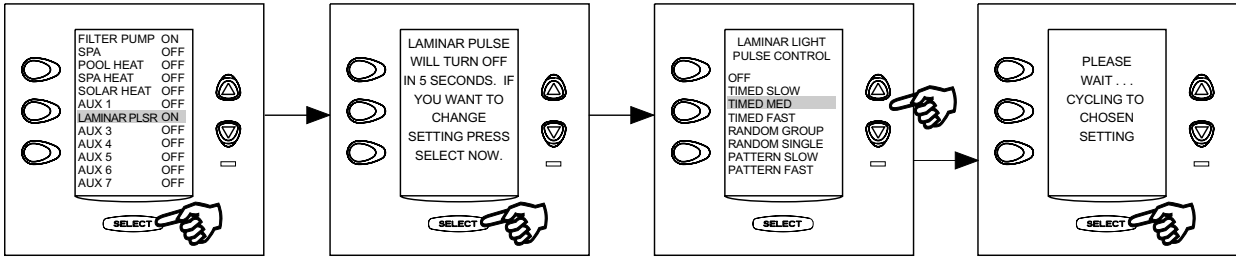
Highlight AUX 2 (or auxiliary assigned to laminar light) and press SELECT. The most recently selected pulse control function will be displayed. Use the UP/DOWN arrow keys to highlight the desired selection and press SELECT.

**NOTE** If the BACK key is pressed when on this screen, then the most recently selected pulse control function will be selected again. If the SELECT key or the BACK key is not pressed, and if it has been 15 seconds since the UP/DOWN keys have been pressed, then the most recently selected LPC4 function will be selected again.

**NOTE** From the EQUIPMENT ON/OFF menu, you can turn the item ON or OFF or change the current setting. If you turn the Laminar Pulsar (LAMINAR PLSR) ON, you have the option to change the current setting or it will come on using that setting.

#### Important Information

Do not activate this feature unless you are certain that a Laminar Pulse Control (LPC4) is installed on your system



## Set Light Colors

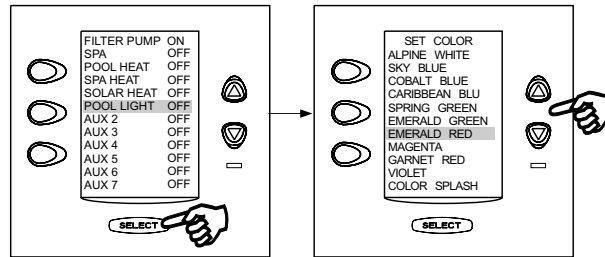
**NOTE** This equipment may not be part of your system. Please check with your installer.

The SET COLOR menu is used to set the color of a color light and then turn the light on.

**NOTE** Prior to setting the color of the light, the light must be assigned and controlled by an auxiliary (for example, AUX 1). See "Using System Setup" to assign the light to an auxiliary control. Please note that the auxiliary control can be custom labeled.

### To use Set Colors

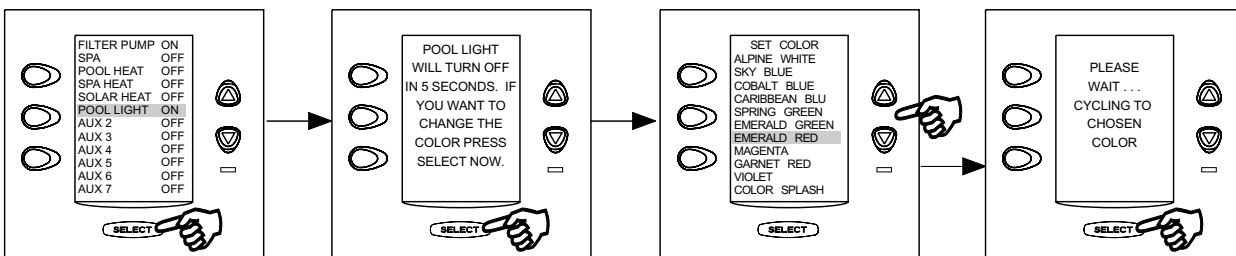
Highlight the auxiliary assigned to the color light and press SELECT. A list of available colors will be displayed. The most recently selected color will be highlighted. Use the UP/DOWN arrow keys to highlight the desired color and press SELECT.



**NOTE** If you select POOL LIGHT or SPA LIGHT from the EQUIPMENT ON/OFF menu and the light is already ON, pressing SELECT will display the message "LIGHT WILL TURN OFF IN 5 SECONDS. IF YOU WANT TO CHANGE THE COLOR PRESS SELECT NOW". If you press SELECT, the SET COLOR menu will open and allow you to select a different color. If a different color is chosen, the light will reset to Alpine White, rotate to the selected color, and then automatically lock on to that color. During the color rotation, the message "PLEASE WAIT...CYCLING TO CHOSEN COLOR" will be displayed.

When a pool or spa light is turned ON manually, by the OneTouch control panel, or by a program, the last used color will automatically be chosen unless you press SELECT to change the color.

If you press the BACK key when in the EQUIPMENT ON/OFF menu, the light will turn on the *last* selected color. If the SELECT key or the BACK key is not pressed, and if it has been 15 seconds since the UP/DOWN keys have been pressed, then the most recently selected color will be selected again.



### Important Information

Do not activate this feature unless you are certain that color lights are installed on your system

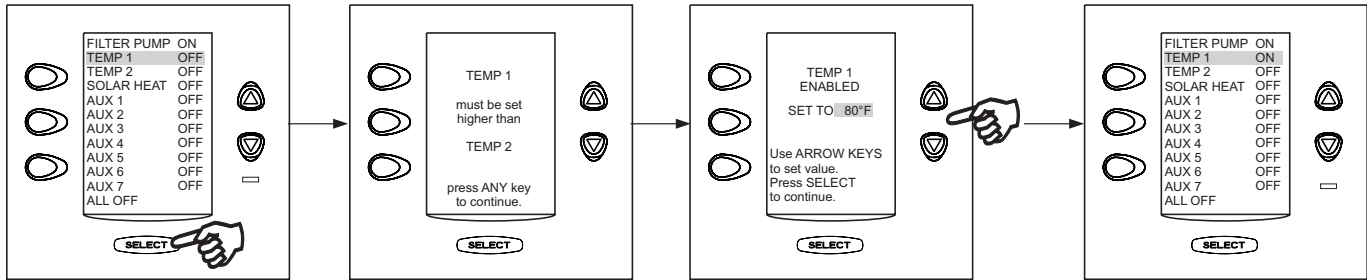
## Section 4. Using the Equipment On/Off Model Specific Menus

### TEMP1 (Pool or Spa Only)

**TEMP1** is the priority temperature. It must be set higher than **TEMP2**, and it overrides **TEMP2** whenever it is enabled. Set temperature for **TEMP1** before setting temperature for **TEMP2**.

#### To set TEMP1 (Pool or Spa Only)

Highlight **TEMP1** and press **SELECT** twice. Use the **UP/DOWN** arrow keys to set the desired water temperature and press **SELECT** to make that degree setting take effect. Return to the main menu by using the **BACK** button.



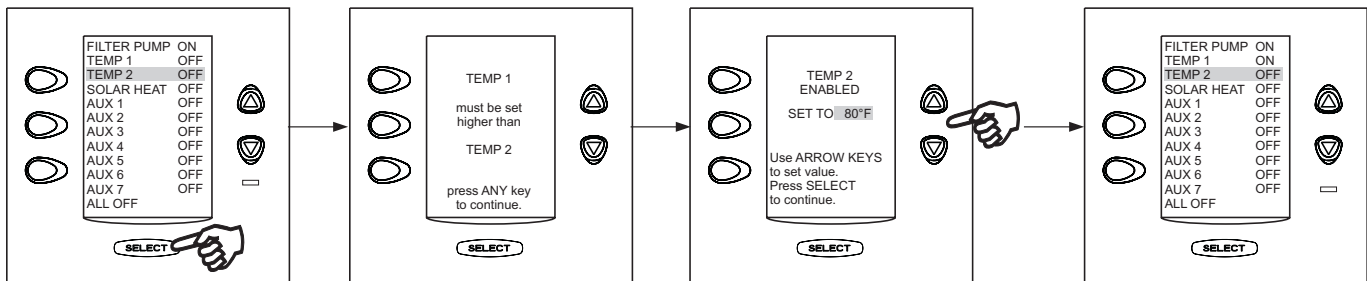
### TEMP2 (Pool or Spa Only)

**TEMP2** is the maintenance (low) temperature. It must be set lower than **TEMP1**. If **TEMP2** is on and **TEMP1** is activated,

**TEMP2** will turn off and **ENABLED** will flash. When **TEMP1** is turned off again, **TEMP2** will reactivate.

#### To set TEMP2 (Pool or Spa Only)

Highlight **TEMP2** and press **SELECT** twice. Use the **UP/DOWN** arrow keys to set the desired water temperature and press **SELECT** to make that degree setting take effect. Return to the main menu by using the **BACK** button.

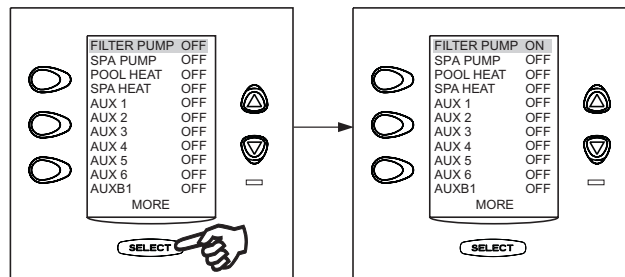


### Filter Pump (Dual Equipment)

The **FILTER PUMP** selection turns the main filtration pump on or off for circulation to the pool. The filter pump also activates if the spa is turned on, if the pool cleaner is turned on, or if the spa spill-over effect is activated. The main filtration pump circulates the pool or spa water through the filter and heater. It must be on if you want to display the pool temperature, or if you want to heat the pool.

#### To use Filter Pump (Dual Equipment)

Highlight **FILTER PUMP** and press **SELECT**. Use the **SELECT** button to turn the equipment on or off.

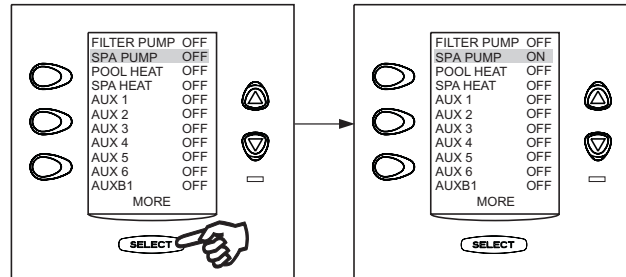


## Spa (Dual Equipment)

Turning on the spa also activates the filter pump and deactivates the pool cleaner if it is on. The SPA mode must be on to display the spa temperature and/or to heat the spa. Activation takes place after a thirty second delay (while valves are turning).

### To use Spa (Dual Equipment)

Highlight SPA and press SELECT. Use the SELECT button to turn the spa on or off.



## Two Speed Operation (\*Not Available for Export Models\*)

**NOTE** This equipment may not be part of your system. Please check with your installer. Optional TWO SPEED RELAY required.

### Two Speed Manual Operation

- **For Pool and Spa Combination Units**

If your control is a POOL and SPA combination with a 2-speed filtration pump, the control will operate as follows: HIGH SPEED (Filter Pump) must be on before LOW SPEED. Filter Pump button, as well as the Spa button, turns it to HIGH SPEED. LOW SPEED (AUX 2) button toggles back and forth from LOW to HIGH.

- **For Pool or Spa Only Units**

To use HIGH/LOW Speeds, Filter Pump turns on HIGH SPEED, AUX 2 turns on LOW SPEED. Whatever mode last used is the off button. To toggle, press whichever speed is not on.

- **For Dual Equipment Units**

AquaLink RS 2/6 operates the same as the Pool/Spa Only units; i.e., Filter Pump turns on HIGH SPEED and AUX 2 turns on LOW SPEED. The mode last used is the off button. To toggle, press whichever speed is not on. 2-speed works only on spa filter pump.

- **Two Speed Programming for All Units**

When programming HIGH and LOW Speeds to operate together, think of HIGH SPEED (Filter Pump) as total duration of filtration time, then set Low Speed (AUX 2) to operate within that duration. For example, if you want High Speed on for 2 hours and Low Speed for 10 hours, program the Filter Pump (High Speed) from 8 AM to 8 PM and Low Speed from 10 AM to 8 PM.

**NOTE** It is not necessary to program both HIGH and LOW Speeds, even with a Combo Control System. If only LOW SPEED is programmed, HIGH SPEED will turn on at the LOW SPEED on time to prime the pump. After 3 minutes the system will switch to LOW SPEED for the remainder of its programmed time.

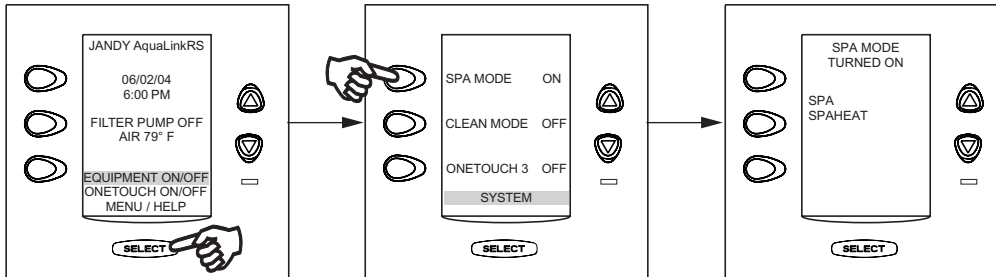
## Section 5. Using the OneTouch Menu

### OneTouch

Each individual OneTouch mood/scene setting will allow you to run multiple devices and heat to preset water temperatures with the touch of one button (see OneTouch under System Setup menu).

### To use OneTouch

Use this menu to turn on or off one of three mood/scene settings. Highlight ONETOUCH ON/OFF and press SELECT. To activate a mood/scene setting, select ONETOUCH ON/OFF, use the button directly opposite to select the proper mode.



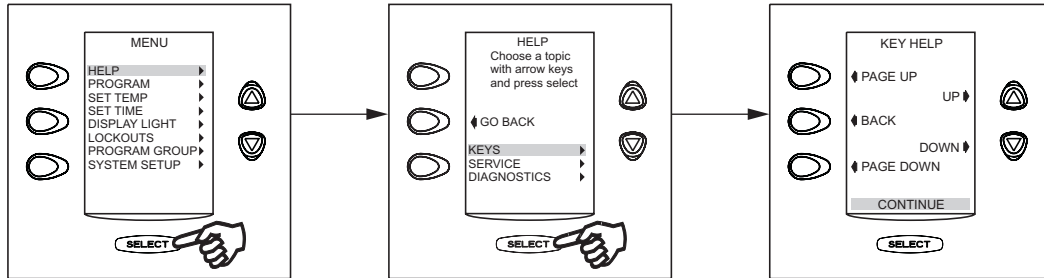
## Section 6. Using the Help Menu

### Keys Menu

In the HELP menu you will find the KEYS menu. The KEYS menu identifies the buttons on the control panel.

#### To use the Keys menu

Highlight MENU/HELP and press SELECT, highlight HELP and press SELECT. Highlight KEYS by using the UP/DOWN arrow keys and pressing SELECT. Return to the main menu by highlighting CONTINUE and pressing SELECT or use the BACK button.

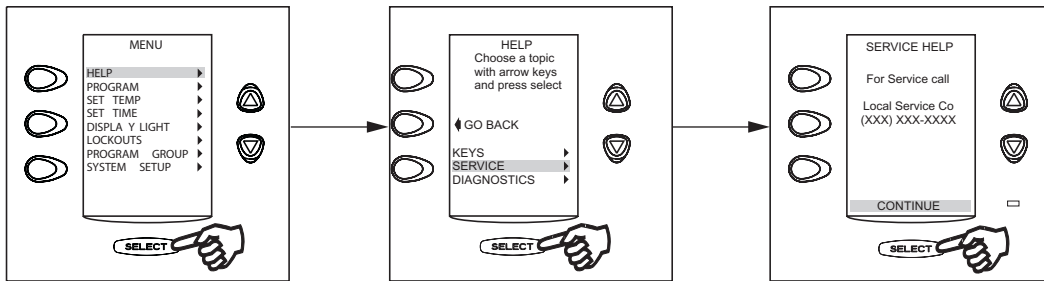


### Service Menu

In the HELP menu you will find the SERVICE menu. The SERVICE menu gives you the phone number (if entered) for your local service company. See PRODUCT INFO menu, under SYSTEM SETUP, to enter your local service company information.

#### To use the Service menu

Highlight MENU/HELP and press SELECT, highlight HELP and press SELECT. Highlight SERVICE by using the UP/DOWN arrow keys and press SELECT.

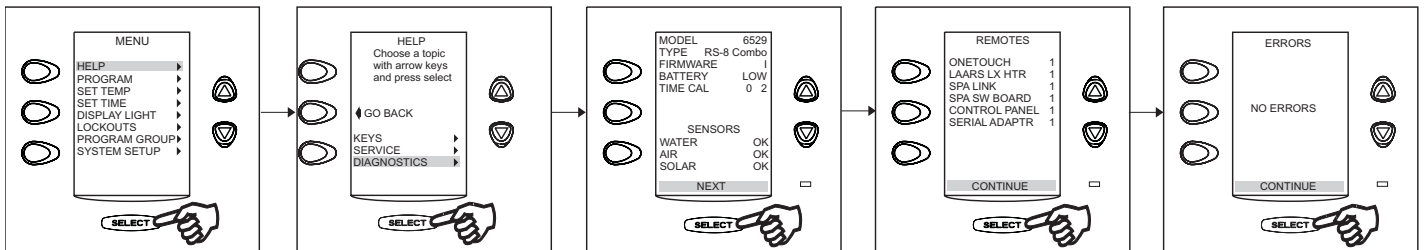


### Diagnostics Menu

In the HELP menu you will find the DIAGNOSTICS menu. The DIAGNOSTICS menu tells you the model, type, firmware revision level, battery status, and time calibration. Also, the connection of temperature sensors is checked.

#### To use the Diagnostics menu

Highlight MENU/HELP and press SELECT, highlight HELP and press SELECT. Highlight DIAGNOSTICS by using the UP/DOWN arrow keys and press SELECT. Select NEXT and a check of the remote(s) will be run. Select CONTINUE and the system will check for errors.





## Program Menu

The Program menu allows on and off times for any equipment controlled by the AquaLink RS. You can program equipment to turn on or off all days, weekends, weekdays, or any specific day of the week. Each piece of equipment can be programmed for multiple on/off times each day.

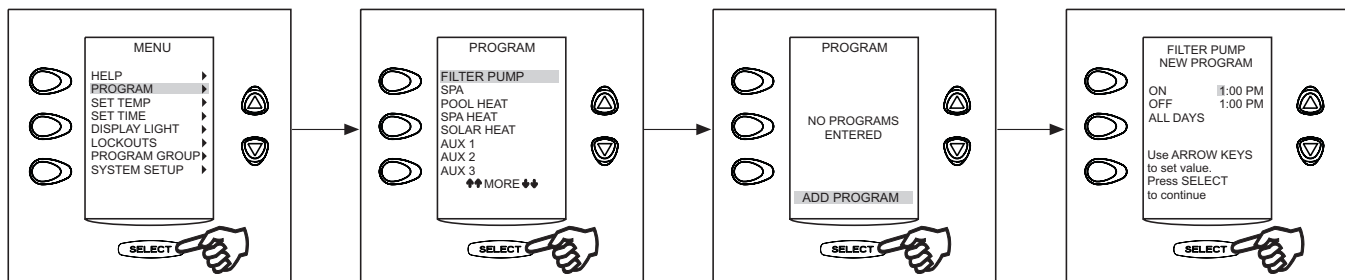
To add programs use the PROGRAM menu. Highlight ADD PROGRAM, and press SELECT. Use UP/DOWN arrows keys to set times, press SELECT to continue.

To delete programs, use the PROGRAM menu. Highlight DELETE PROGRAM, and press SELECT. Program to be deleted must be displayed on screen. To scroll through multiple programs, use the UP/DOWN arrows keys to select the program to be deleted.

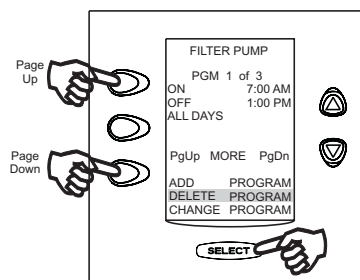
To change programs, also use the PROGRAM menu. Highlight CHANGE PROGRAM, and press SELECT. Program to be changed must be displayed on screen. To scroll through multiple programs, use the UP/DOWN arrows keys to select the program to be changed.

### To set automatic on and off times

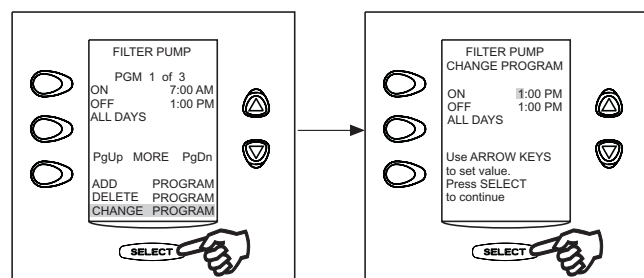
Highlight MENU/HELP and press SELECT, highlight PROGRAM and press SELECT. While in the PROGRAM menu, highlight the piece of equipment and press SELECT, highlight ADD PROGRAM and press SELECT, enter the ON/OFF times and the day(s) by using the UP/DOWN arrow buttons to set values and the SELECT button to continue. When the days have been selected, the screen will change to show the piece of equipment selected, number of programs, on/off times, day(s) selected, a prompt to PAGE UP and PAGE DOWN to scroll between programs (if more than one), and the chance to add, delete, or change any of the settings to a program. Use the BACK button to go to the previous screen.



OR



OR



## Set Temperature Menu

The SET TEMP menu allows you to preset the pool and spa thermostats. The default pool (TEMP1) temperature is 80°F. The default spa (TEMP2) temperature is 102°F.

SET TEMP will allow you to ENABLE the Maintain Temperature feature and adjust the hours to limit the time of day the Maintain Temperature feature will be active.

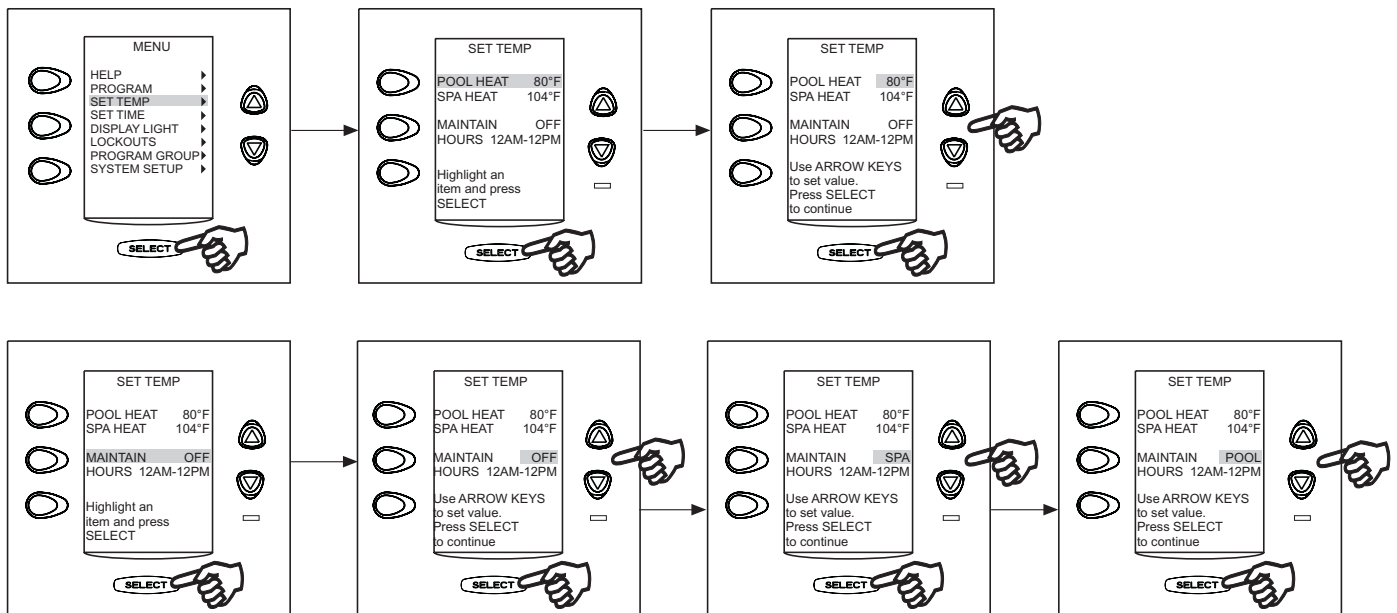
### To set Pool/Spa Temperatures

Highlight MENU/HELP and press SELECT, highlight SET TEMP and press SELECT. Inside the SET TEMP menu, use the UP/DOWN arrow keys to highlight either POOL (TEMP1) or SPA (TEMP2) and press SELECT. Use the UP/DOWN arrow keys to increase or decrease the temperature and press SELECT to apply.

**MAINTAIN TEMP SETTING:** highlight MAINTAIN and press SELECT to turn on (or off) this function. The MAINTAIN feature will run the pump and heater as required to keep the water at the desired temperature. When this feature is on, the system will periodically activate the pump, sample the water, and fire the heater to maintain the preset temperature as required. Heater must be enabled at all times for this feature to maintain temperature.

**HOURS:** Highlight HOURS and press SELECT. Use the UP/DOWN arrow keys to change the HOURS the system will maintain the preset temperature.

**NOTE** Only Dual Equipment models will maintain more than one body of water.

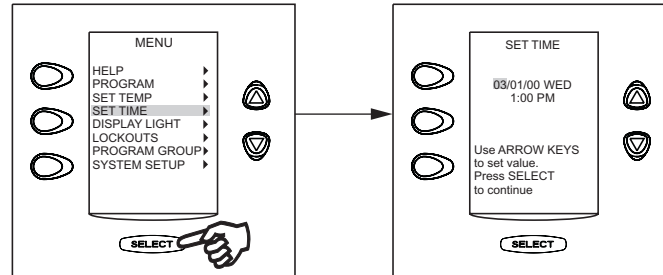


## Set Time Menu

The SET TIME menu allows the correct time and date to be entered. The correct time and date ensures that programming will work properly.

### To set the Time

Highlight MENU/HELP and press SELECT, highlight SET TIME and press SELECT. Use the UP/DOWN arrow keys to set values. Press the SELECT button to continue.



## AquaPure Menu

**NOTE** This equipment may not be part of your system. Please check with your installer.

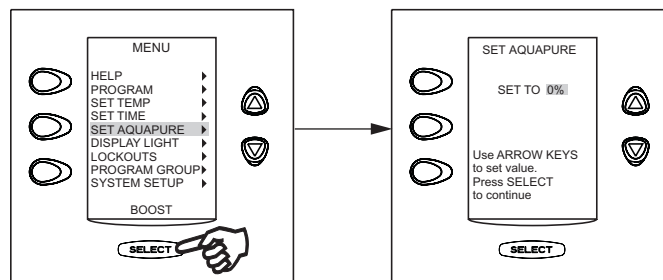
AquaPure Chlorine Generator systems exclusively communicate with the AquaLink RS. The AquaLink RS Control Panel will display % of chlorine output.

This menu item will only appear when an AquaPure chlorine generator is connected to the AquaLink RS system.

### To set the AquaPure Output Percentage (%)

Highlight MENU/HELP and press SELECT, highlight SET AQUAPURE and press SELECT. Use the UP/DOWN arrow keys to change the percentage.

See page 22 for BOOST options.

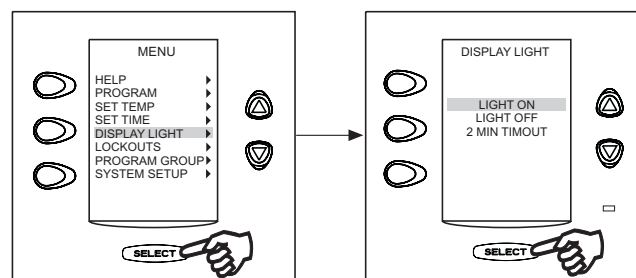


## Display Light Menu

The DISPLAY LIGHT menu can be set to on, off, or with a two (2) minute time out. Pressing any button will turn display light on (unless the display is set to off).

### To change the Display Light

Highlight MENU/HELP and press SELECT, highlight DISPLAY LIGHT and press SELECT. Use the UP/DOWN arrow keys to set values and the SELECT button to continue.



### Lockout Menu

The LOCKOUTS menu prevents changes to specific AquaLink RS operations.

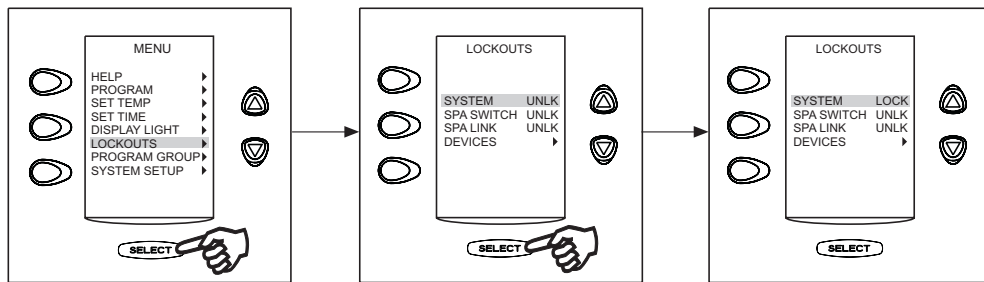
When SYSTEM feature is on "LOCK", changes to program and system setup items are prevented.

When SPALINK RS and SPA SWITCH features are on "LOCK", all control from the SpaLink RS and Spa Side Switch are prevented.

When DEVICE feature is on "LOCK", the selected device will not activate either manually or by programming. This feature can be used to prevent a heater from firing, or stop a fill line from adding water during the rainy months.

### To use Lockout

Highlight MENU/HELP and press SELECT, highlight LOCKOUTS and press SELECT. Highlight a feature and press SELECT. Use the SELECT button to toggle between UNLK and LOCK, and the UP/DOWN arrow keys to move between devices. Press the BACK button when done.

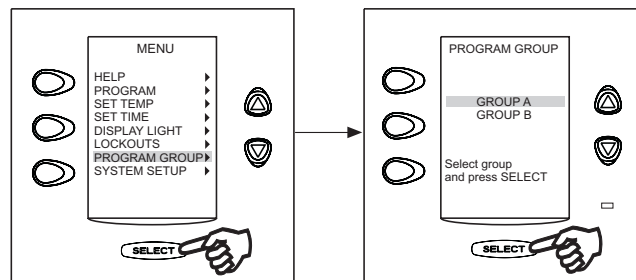


### Program Group Menu

Program groups are useful for changing between specific settings for summer, winter, or vacation. The AquaLink RS will store on/off times for equipment in each group. Use the Program Group menu to switch between Program Group A and Program Group B. Group A is the default. Program Group A or B will not appear unless PROGRAM GROUP has been selected. Confirm you are in the right Program Group before programming equipment.

### To use Program Group

Highlight MENU/HELP and press SELECT, highlight PROGRAM GROUP and press SELECT. Use the UP/DOWN arrow keys to move between GROUP A & GROUP B. Use the SELECT button to choose which program group to run.

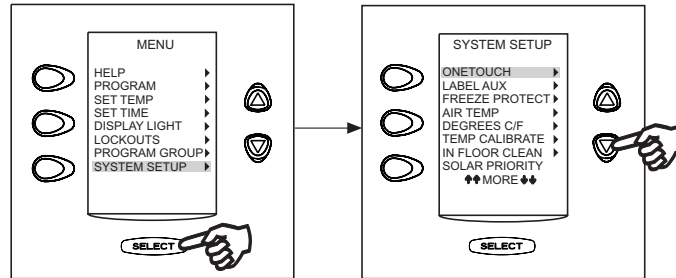


## System Setup Menu

Check with installer before making changes to the SYSTEM SETUP.

### To use the System Setup menu

Highlight MENU/HELP and press SELECT, highlight SYSTEM SETUP and press SELECT. Use the UP/DOWN arrow keys to move the highlight bar up or down, **or** use PAGE UP or PAGE DOWN to move through the menus. Press SELECT on the highlighted item to move to the next screen.



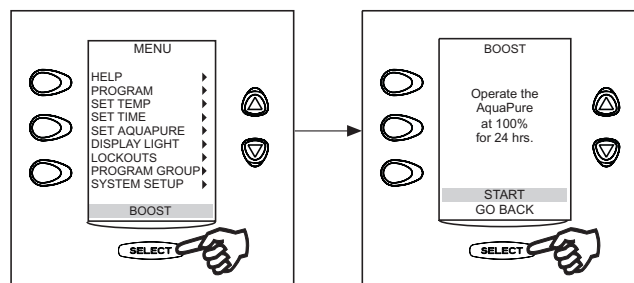
## Boost Menu

Activates the BOOST feature that will operate the AquaPure Chlorine Generator at 100% output for 24 hours.

### To use the Boost menu

Highlight MENU/HELP and press SELECT, highlight BOOST and press SELECT. Highlight START and press SELECT to begin the chlorination cycle.

Use SET AQUAPURE in MENU/HELP to set the percentage and the AQUAPURE HOURS in SYSTEM SETUP to set the hours of operation.



## Section 7. Using the System Setup Menu

### OneTouch Menu

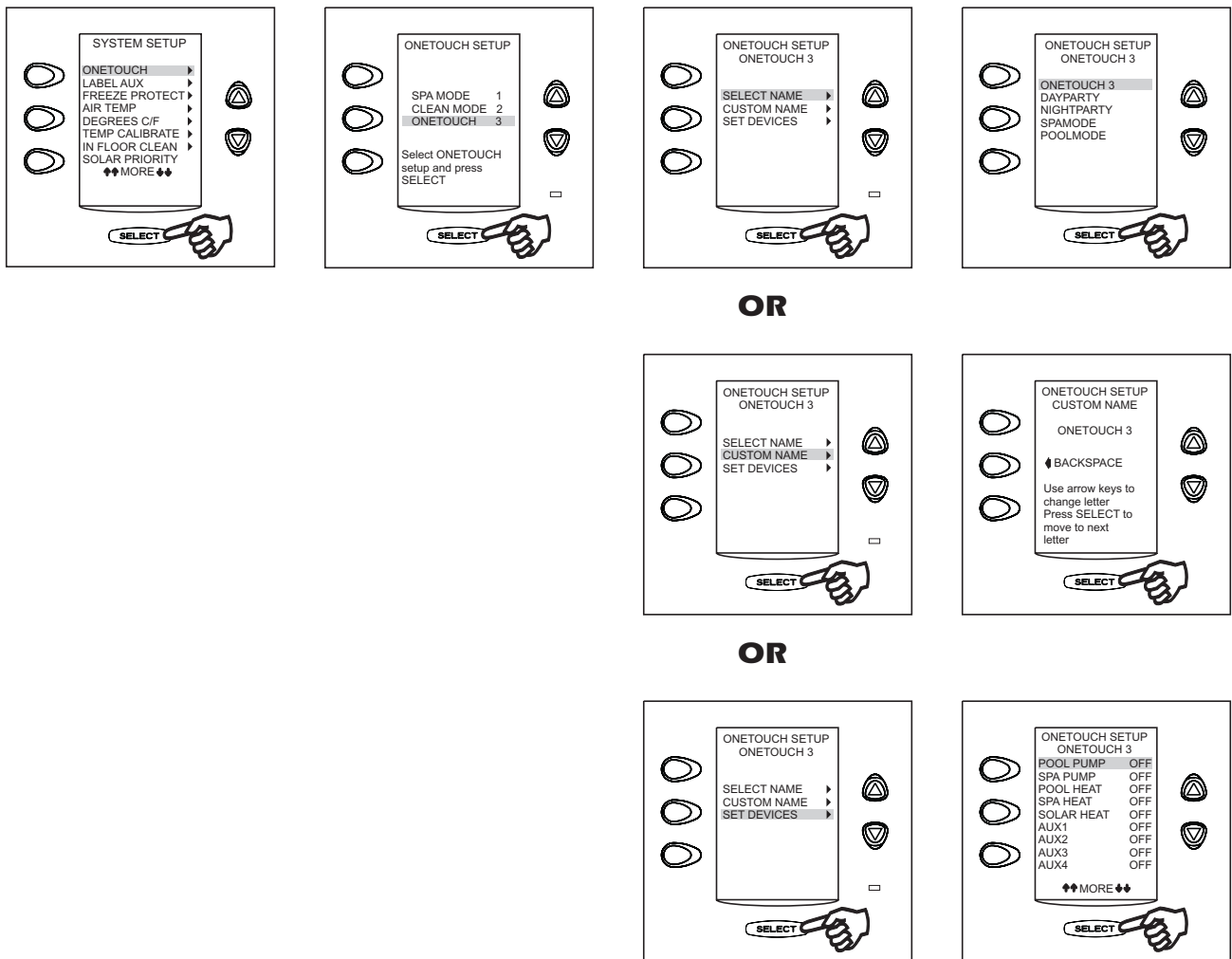
This menu allows custom configuration of the three OneTouch mood/scene buttons. You can choose a predetermined name from the SELECT NAME menu or enter a CUSTOM NAME. You can also select specific devices for each mood/scene button. Each mood setting allows for an independent thermostat setting.

#### To set up the OneTouch Buttons

Highlight MENU/HELP and press SELECT, highlight SYSTEM SETUP and press SELECT, highlight ONETOUCH and press SELECT. Select ONETOUCH SETUP and press SELECT. Use the UP/DOWN arrow keys to choose between SELECT NAME, or CUSTOM NAME. (For Custom Name use the UP/DOWN arrow keys to change a letter and press SELECT to move to the next letter.)

**NOTE** In between the Z and the 0 is the "space" for in between words.

**SET DEVICES:** Use the SELECT button to choose a device for your choice of mood/scene settings. When an item is selected, the ON will be displayed on the right side of the screen. Select all pieces of equipment for that ONETOUCH button, then press the BACK button to set up next ONETOUCH setting.



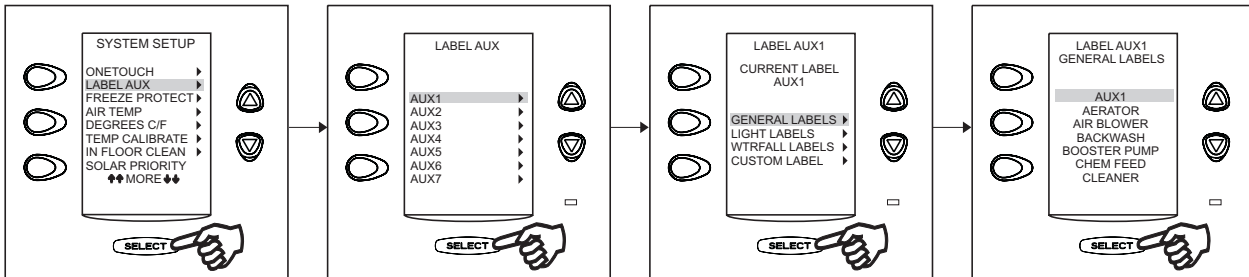
## Label Auxiliary Menu

The LABEL AUX menu allows custom naming of auxiliary equipment. For example, you can set the display to read YARD LIGHT instead of AUX 4 .

### To use the Label Auxiliary menu

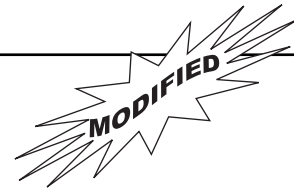
Highlight MENU/HELP and press SELECT, highlight SYSTEM SETUP and press SELECT, highlight LABEL AUX, press SELECT. Highlight auxiliary to be labeled and press SELECT. Highlight either GENERAL LABELS, LIGHT LABELS, WTRFALL LABELS, or CUSTOM LABEL and press SELECT. Use the UP/DOWN arrow keys to highlight a name and press SELECT.

Under CUSTOM LABEL you may type in any name. Use the UP/DOWN arrow keys to change letters and use SELECT to move to the next letter.



## Boost Setup Menu

Use this menu to adjust the number of hours or mode of Boost.



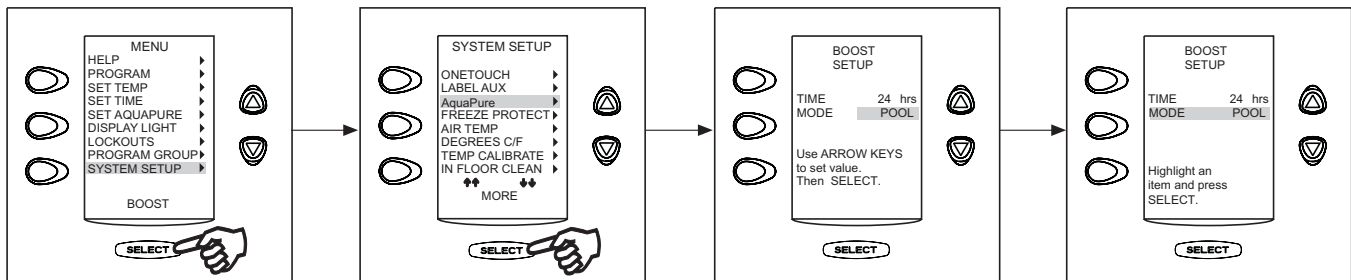
**NOTE** The MODE selection is only available if the Power Center Bezel dip switch 3 is turned on (Spillover mode). If it is off, then only TIME is displayed.

The system will auto-detect the AquaPure chlorine generator.

### To set Boost

Highlight MENU/HELP and press SELECT, highlight SYSTEM SETUP and press SELECT, highlight AquaPure and press SELECT. Use the UP/DOWN arrow keys to select TIME or MODE. If selecting MODE, use the UP/DOWN arrow keys to select either SPILLOVER or POOL. If POOL is selected, the return path for the water is to the pool not the spa.

**NOTE** To operate the AquaPure in BOOST mode when SPILLOVER mode is active, highlight MENU/HELP and press SELECT. Then highlight SYSTEM SETUP and press SELECT. Highlight AquaPure and press SELECT. Highlight MODE and press SELECT. Highlight SPILLOVER and press SELECT.





**FlowLink Menu**

**NOTE** This equipment may not be part of your system. Please check with your installer.

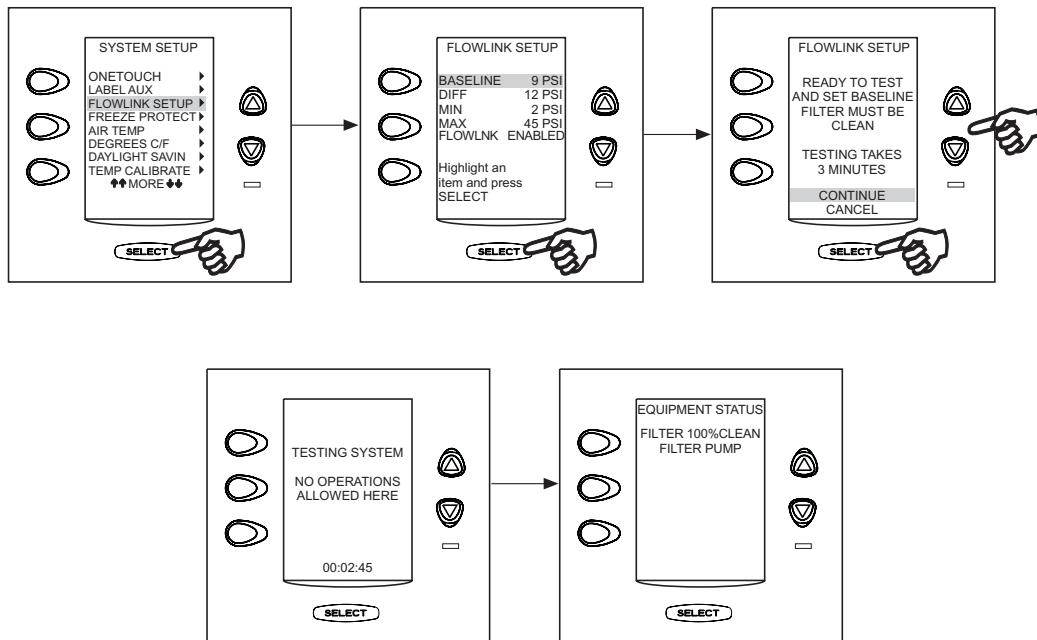
An optional pressure sensor (if installed) will detect the status of your filter and displays the percent clean. In addition, the FlowLink sensor also monitors the system pressure and shuts off the filter pump to protect the equipment if the measured water pressure is less than the minimum or greater than the maximum limits specified on the FLOWLINK SETUP screen.

**NOTE** The filter pump must be turned on in order for FlowLink to be enabled.

**To set up FlowLink**

Highlight MENU/HELP and press SELECT, highlight SYSTEM SETUP and press SELECT, highlight FLOWLINK SETUP and press SELECT. The system is ready to test and set the BASELINE, press SELECT. Highlight CONTINUE and press SELECT. It takes three (3) minutes to test the system. When testing is complete, the program goes to the FlowLink Setup menu. You may change the settings in DIFF, MIN, and MAX, but generally it is better to ask the installer about any changes from the factory-set defaults.

**NOTE** If you wish to disable the FlowLink feature, go to the FlowLink Setup menu, highlight FLOWLNK ENABLED and press SELECT.





## Freeze Protection Menu

Use Freeze Protection menu to assign freeze protection to your pool and spa equipment. When a piece of equipment is assigned to freeze protection, it will turn on when the AquaLink RS detects freezing conditions. The main filter pump is freeze-protected as a default.

Activation temperature can be adjusted between 32° and 42° F. Default freeze protection activation temperature is 38° F and will deactivate within 2° F.

### Important Information on Freeze Protection

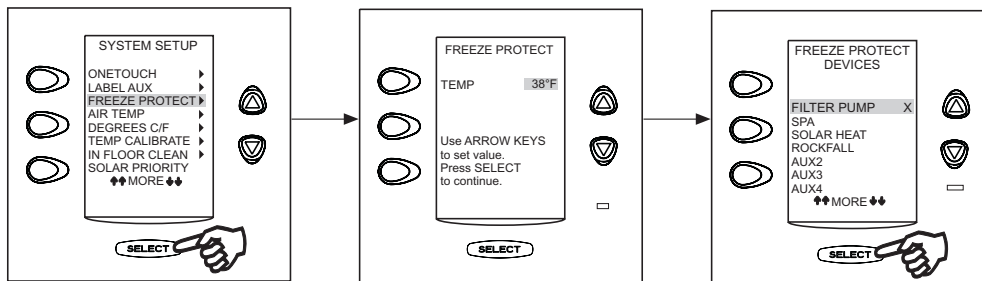
Freeze protection is intended to protect equipment and plumbing for short periods of freezing only. It does this by activating the filtration pump and circulating the water to prevent freeze inside equipment or plumbing. Freeze protection does **not** guarantee that equipment will not be damaged by extended periods of freezing temperatures or power outages. In these conditions, the pool and spa should be shut down completely (e.g. drained of water and closed for the winter) until warmer weather exists.

### ⚠ CAUTION

Activating the spa during freezing conditions will override freeze protection. This means that if you are using your spa when freezing conditions exist, freeze protection will **not** circulate water to non-spa related equipment that you may have freeze protected (e.g. pool cleaner, booster pump) and the potential exists for equipment damage.

### To use the Freeze Protection menu

Highlight MENU/HELP and press SELECT, highlight SYSTEM SETUP and press SELECT, highlight FREEZE PROTECT and press SELECT. Use the UP/DOWN arrows keys to change the activation temperature. Once the temperature is set, use the SELECT button to move to the next screen to assign freeze protection to a selected piece of equipment.

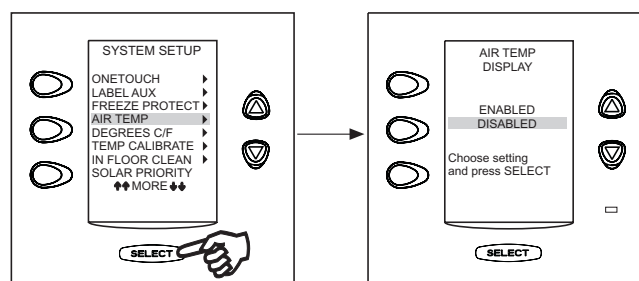


## Air Temperature Menu

Use the Air Temperature menu to turn the air temperature display on or off.

### To disable Air Temperature display

Highlight MENU/HELP and press SELECT, highlight SYSTEM SETUP and press SELECT, highlight AIR TEMP and press SELECT. Use the UP/DOWN arrow keys to highlight desired setting and press SELECT.

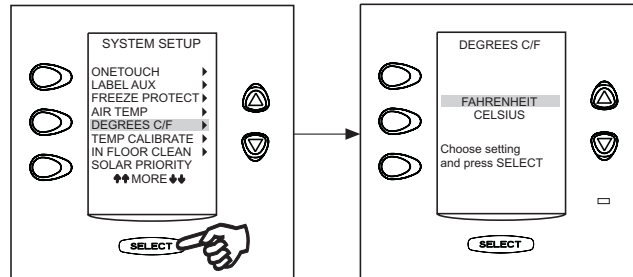


### Degrees C/F Menu

The Degrees C/F menu allows you to change the AquaLink RS temperature display from Fahrenheit to Celsius or vice versa. When changing from Fahrenheit to Celsius you will have to re-enter the temperature settings.

#### To change the Temp readout

Highlight MENU/HELP and press SELECT, highlight SYSTEM SETUP and press SELECT, highlight DEGREES C/F and press SELECT. Use the UP/DOWN arrow keys to highlight desired setting and press SELECT.

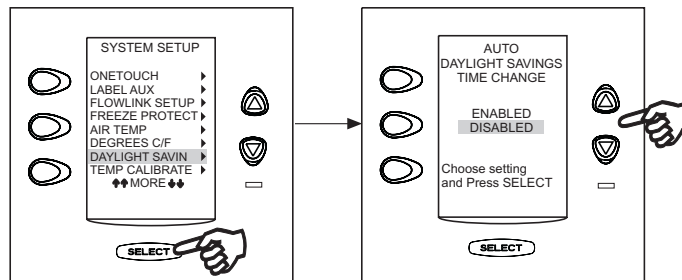


### Daylight Savings Menu

The DAYLIGHT SAVINGS menu enables the automatic adjustment for Daylight Savings Time.

#### To set up Daylight Savings

Highlight MENU/HELP and press SELECT, highlight SYSTEM SETUP and press SELECT, highlight DAYLIGHT SAVINGS and press SELECT. Use the UP/DOWN arrow keys to highlight ENABLED or DISABLED and press SELECT. Default setting is ENABLED.



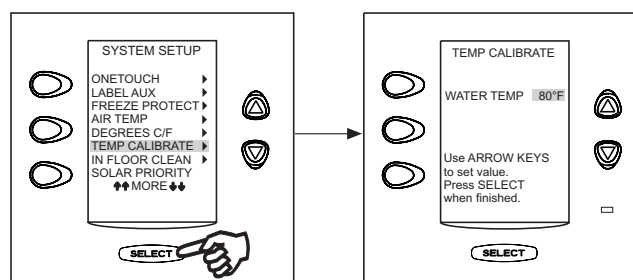
### Temp Calibration Menu

This menu allows adjustment of the temperature that is displayed on the AquaLink RS. The temperature can only be adjusted up 4 degrees Fahrenheit or down 4 degrees Fahrenheit, see note below.

#### To adjust Temperature display

Highlight MENU/HELP and press SELECT, highlight SYSTEM SETUP and press SELECT, highlight TEMP CALIBRATE and press SELECT. Use the UP/DOWN arrow keys to set values and press SELECT when finished.

**NOTE** If the temperature is off by more than four (4) degrees, contact your local service representative.

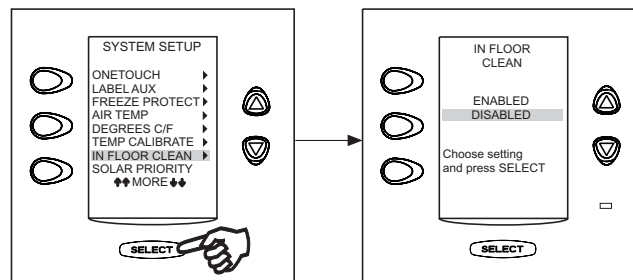


## In Floor Cleaning Menu

This menu is used to ENABLE or DISABLE the automatic in floor cleaning feature. When enabled the AquaLink RS rotates the in-floor JVs every 20 minutes.

### To use In Floor Cleaning menu

Highlight MENU/HELP and press SELECT, highlight SYSTEM SETUP and press SELECT, highlight IN FLOOR CLEANING and press SELECT. This menu is used to ENABLE or DISABLE the in floor cleaning (rotates the JVs every 20 minutes). In floor cleaning only works when the filter pump is on. Use the UP/DOWN arrow keys to highlight desired setting and press SELECT.



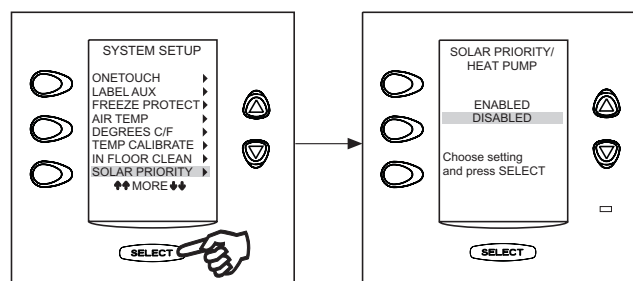
## Solar Priority/Heat Pump Menu

The Solar Priority/Heat Pump menu allows the system to use Solar Heat/Heat Pump primarily. If Solar Heat is no longer available, the system will automatically switch to the alternate heat source.

### To use the Solar Priority/Heat Pump menu

Highlight MENU/HELP and press SELECT, highlight SYSTEM SETUP and press SELECT, highlight SOLAR PRIORITY and press SELECT. Use the UP/DOWN arrow keys to highlight desired setting and press SELECT.

When solar and heater are enabled the solar will heat the water until either the thermostat setting has been reached or solar heat is no longer available. If the solar panel is not hot enough, solar heat will shut off and the other heat source (usually gas heater) will take over to bring the water up to the thermostat setting. This menu is used to ENABLE or DISABLE the solar priority.

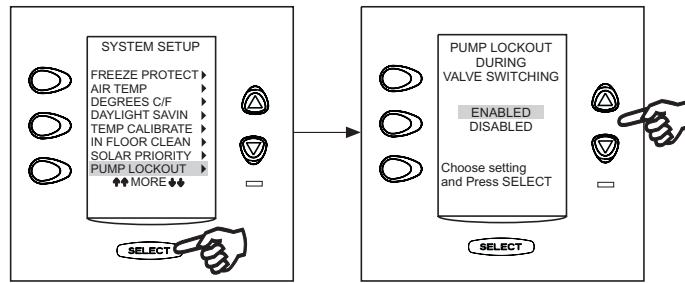


## Pump Lockout Menu

The PUMP LOCKOUT menu allows you to enable (pump off) or disable (pump stays on) when valves are rotating from pool to spa.

### To set Pump lockout

Highlight MENU/HELP and press SELECT, highlight SYSTEM SETUP and press SELECT, highlight PUMP LOCKOUT and press SELECT. Use the UP/DOWN arrow keys to highlight ENABLED or DISABLED and press SELECT.

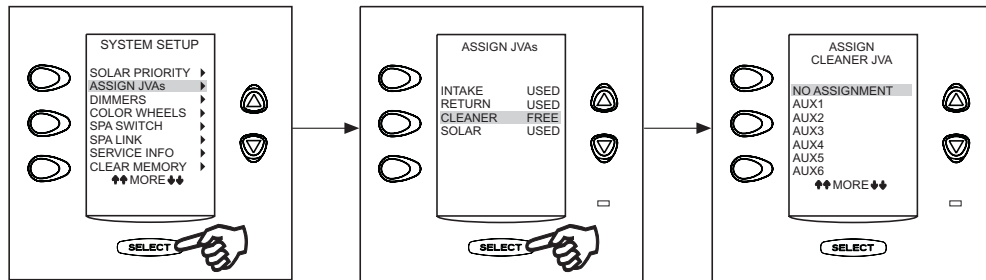


### Assign JVA Menu

The ASSIGN JVAs menu allows Jandy Valve Actuators (JVAs) to be assigned to any auxiliary button. This means that whenever you press that auxiliary button, a valve turns. On pool/spa combination models, there are two extra JVAs that can be assigned to auxiliary buttons: the cleaner JVA and the solar JVA. On pool/spa only models, there are four JVAs that can be assigned to auxiliary buttons. The installer must set these JVAs for this feature to operate correctly. Assigning JVAs lets the owner control certain features like diverting water to a waterfall or bank of spa jets. Multiple JVAs can be assigned to one auxiliary button without extra hardware.

#### To set Assign JVAs

Highlight MENU/HELP and press SELECT, highlight SYSTEM SETUP and press SELECT, highlight ASSIGN JVAs and press SELECT. Highlight the JVA you wish to use and press SELECT. Use the UP/DOWN arrow keys to move the highlight bar to the auxiliary button you want to assign, press SELECT to assign the JVA.



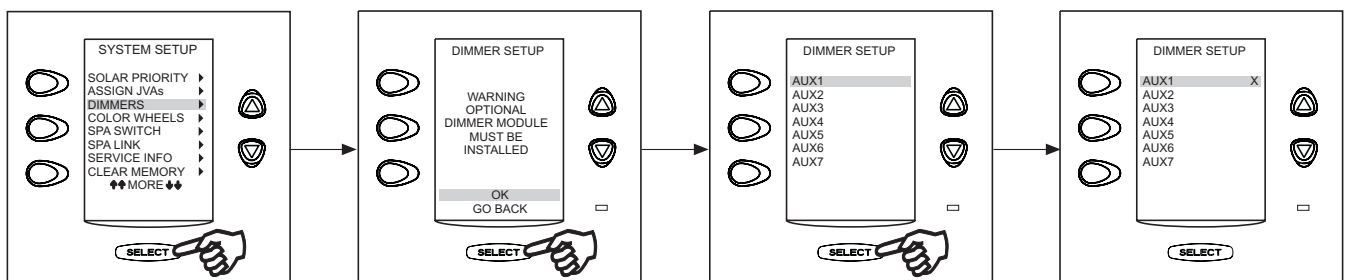
### Set Dimmers Menu

The Set Dimmer menu is used to assign auxiliary buttons to control a dimmable light.

**NOTE** An optional Light Dimming Relay must be installed and only 120 VAC lighting (or suitable transformer-driven lights) can be dimmed.

#### To set Light Dimmers

Highlight MENU/HELP and press SELECT, highlight SYSTEM SETUP and press SELECT, highlight DIMMERS and press SELECT. This menu is used to assign an auxiliary to control a dimmable light. You must install a light dimming relay in order for your light(s) to be dimmable. Highlight OK, then press SELECT. Use UP/DOWN arrow keys to highlight auxiliary to be dimmed, then press SELECT. An "X" will appear next to the selected item. Select all items connected to light dimming modules. Use the BACK button when finished.



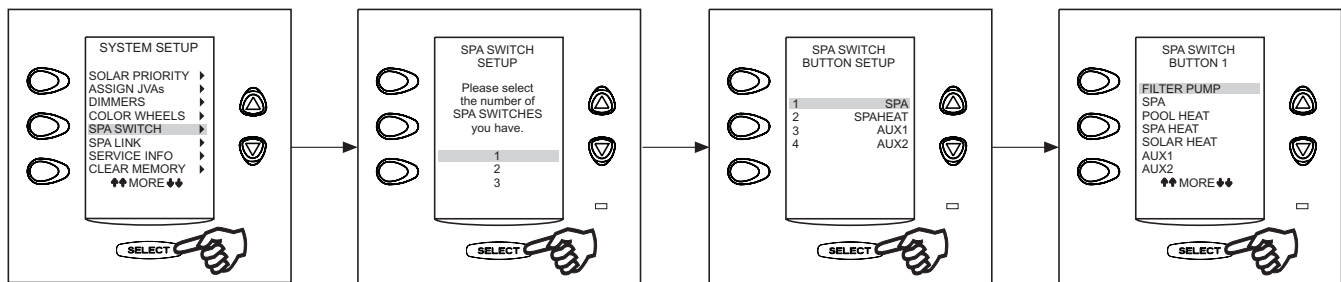
## Spa Side Switch Menu

The Spa Side Switch menu allows you to define which equipment is controlled by the buttons on the optional Spa Side Switch(es). Default settings are spa, spa heat, Aux1 and Aux2.

You may want to write down your spa side switch button assignments so that you can label the buttons on the switch with the label pack provided.

### To set the Spa Side Switch

Highlight MENU/HELP and press SELECT, highlight SYSTEM SETUP and press SELECT, highlight SPA SWITCH and press SELECT. Inside the SPA SWITCH menu, highlight the number of Spa Side Switches you have and press SELECT. Use the UP/DOWN arrow keys to move the highlight bar to choose which button you are assigning, press SELECT. Use the UP/DOWN arrow keys to move the highlight bar to choose which piece of equipment will be associated with the button, press SELECT. After pressing SELECT on the piece of equipment, you will be returned one screen to continue assigning Spa Side Switch buttons.



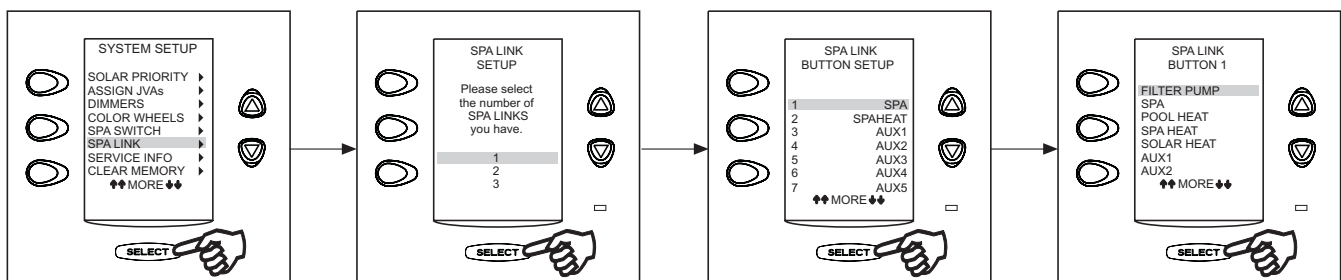
## SpaLink Menu

The SPALINK menu allows you to define which equipment is controlled by the buttons on the optional SpaLink(s). Default settings are spa, spa heat, Aux1, Aux2, Aux3, Aux4, and Aux5.

You may want to write down your SpaLink button assignments so that you can label the buttons on the switch with the label pack provided.

### To set the SpaLink

Highlight MENU/HELP and press SELECT, highlight SYSTEM SETUP and press SELECT, highlight SPALINK and press SELECT. Inside the SPALINK menu, highlight the number of SpaLink(s) you have and press SELECT. Use the UP/DOWN arrow keys to move the highlight bar to choose what button number goes with what equipment, press SELECT. Use the UP/DOWN arrow keys to move the highlight bar to choose which piece of equipment will be associated with the button, press SELECT. After pressing SELECT on the piece of equipment, you will be returned one screen to continue assigning SpaLink RS buttons.



### Dusk Setup Menu

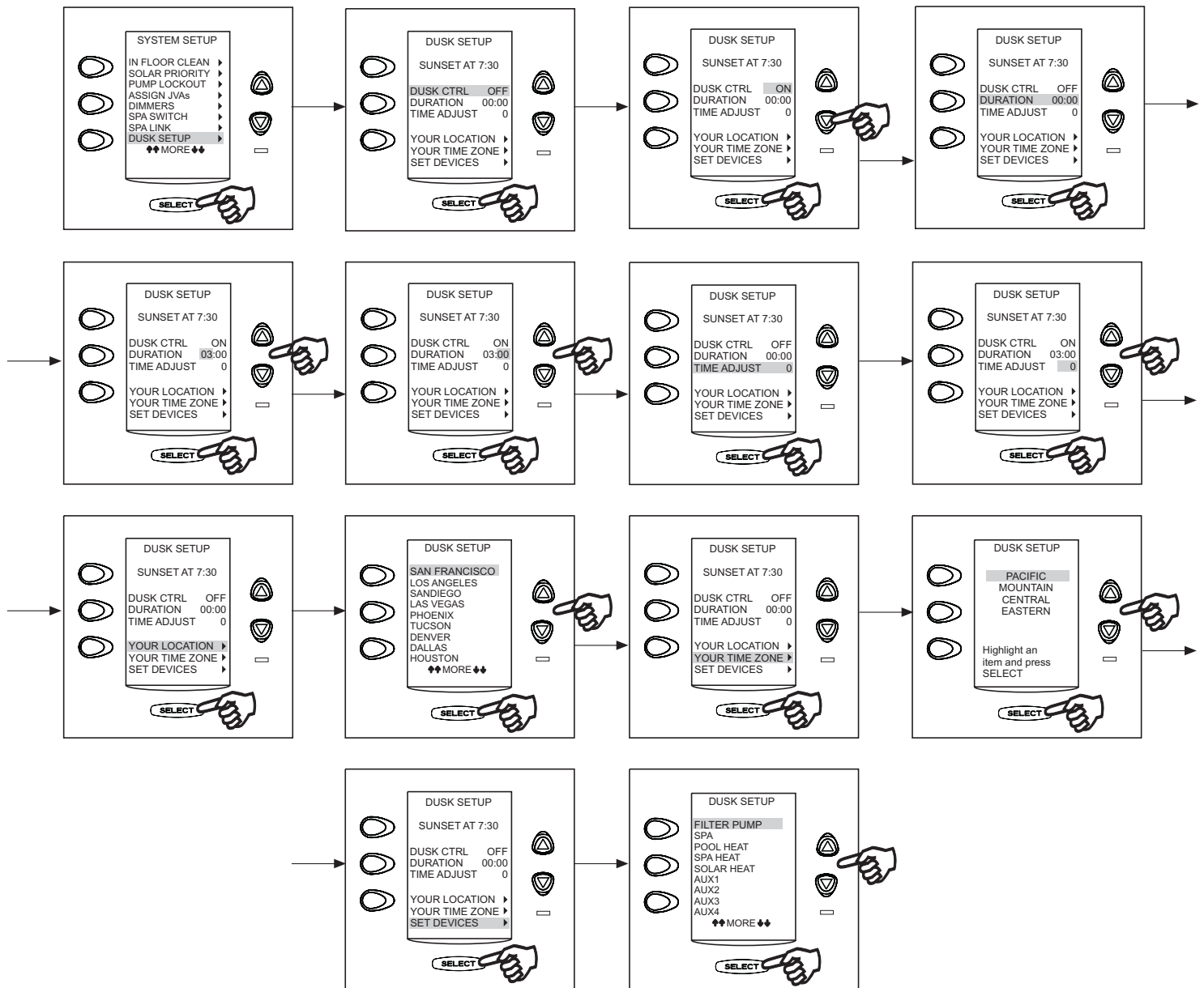
The Dusk Setup menu is used to set a device to automatically turn on at sunset.

You can set the duration, a time adjust value if you live between major city selections or in a heavily shaded area, and set specific devices.

**NOTE** Time and Date must be correct, see Set Time.

#### To use the Dusk Setup menu

Highlight MENU/HELP and press SELECT, highlight SYSTEM SETUP and press SELECT, highlight DUSK SETUP and press SELECT. Highlight DUSK CTRL, press SELECT. Use an UP/DOWN arrow button to turn the function on, press SELECT. Highlight DURATION, press SELECT. Use the UP/DOWN arrow keys to select the amount of time the device is to stay on, press SELECT. Highlight TIME ADJUST, press SELECT. Use the UP/DOWN arrow keys to choose the time the device turns on before (negative number) or after (positive number) dusk. Highlight YOUR LOCATION, press SELECT. Use the UP/DOWN arrow keys to choose the location closest to you. Highlight YOUR TIME ZONE, press SELECT. Use the UP/DOWN arrow keys to choose the time zone you are located in. Highlight SET DEVICES, press SELECT. Use the UP/DOWN arrow keys to choose the device and press SELECT.

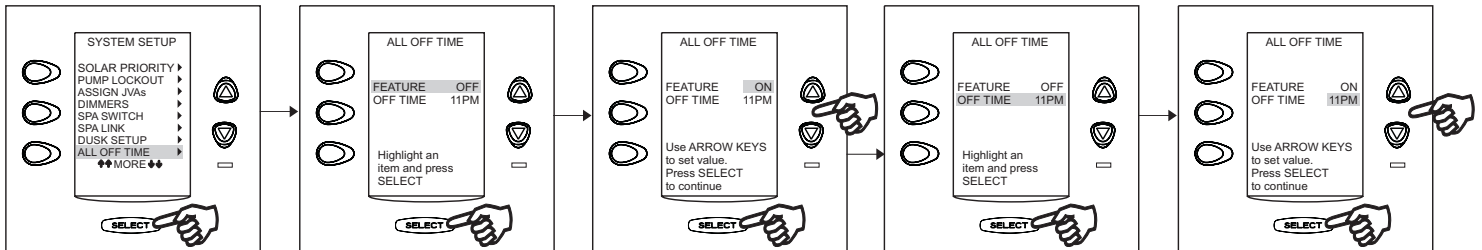


## All Off Time Menu

This ALL OFF TIME menu is used to direct the system to turn everything off at a specific time everyday.

### To use the All Off Time menu

Highlight MENU/HELP and press SELECT, highlight SYSTEM SETUP and press SELECT, highlight ALL OFF TIME and press SELECT. Highlight FEATURE and press SELECT. Use an UP/DOWN arrow key to turn the feature on. Highlight OFF TIME and press SELECT. Use the UP/DOWN arrow keys to select a time all equipment will go off.

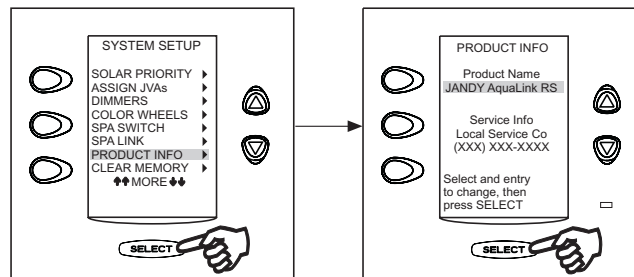


## Product Info Menu

The PRODUCT INFO menu is used to enter a custom product name, local service company name and telephone number.

### To use the Product Info menu

Highlight MENU/HELP and press SELECT, highlight SYSTEM SETUP and press SELECT, highlight PRODUCT INFO and press SELECT. Select any entry to change and press SELECT.

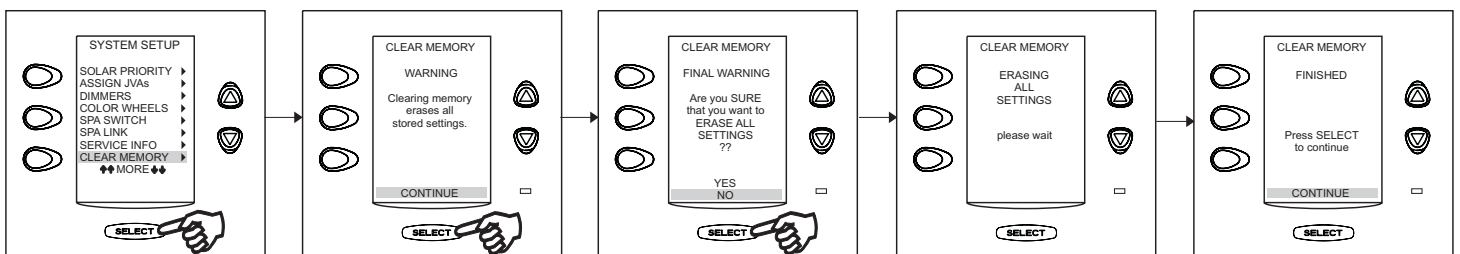


## Clear Memory Menu

The CLEAR MEMORY menu will clear all stored values from the AquaLink RS memory. All settings will be reset to their default settings. Stored values include auxiliary labels, all programs, freeze protection settings, remote settings, and thermostat settings. The time and date will not be cleared.

### To use the Clear Memory menu

Highlight MENU/HELP and press SELECT, highlight SYSTEM SETUP and press SELECT, highlight CLEAR MEMORY and press SELECT. Press SELECT. Use the UP/DOWN arrow keys to select either YES or NO. There will be a delay of 15 seconds before you see the FINISHED screen, select CONTINUE to return to SYSTEM SETUP.



## Set Color Lights Menu



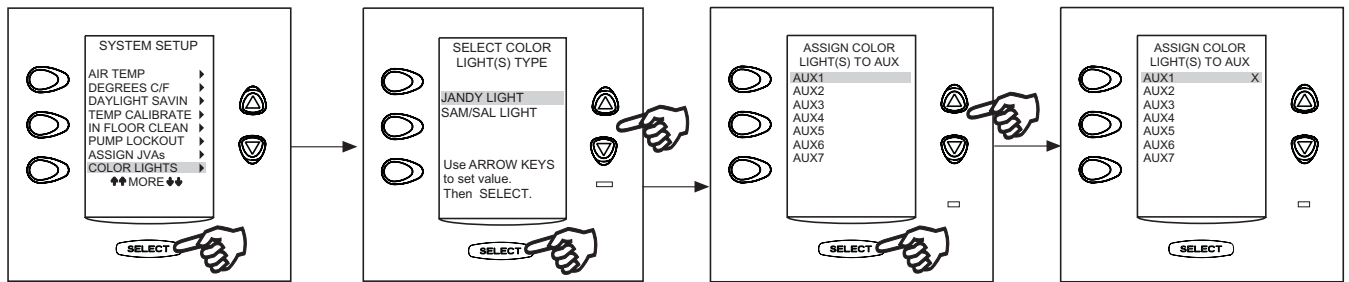
**NOTE** This equipment may not be part of your system. Please check with your installer.

The COLOR LIGHTS menu is used to select the color light type (Jandy or Pentair® SAM™/SAL®), and to assign the color light to an available auxiliary relay.

### To set Color Lights

Highlight MENU/HELP and press SELECT, highlight SYSTEM SETUP and press SELECT, highlight COLOR LIGHTS and press SELECT. Use the UP/DOWN arrow keys to highlight the light type to be controlled, then press SELECT. A list of available auxiliaries will be displayed.

Use the UP/DOWN arrow keys to highlight an auxiliary to be assigned to a color light, then press SELECT. An “X” will appear next to the selected item. If the SELECT button is pressed again, while on the same selected item, the “X” will disappear meaning that a color light is no longer being controlled by the auxiliary. Use the BACK button when finished.



## Device Runtime Menu

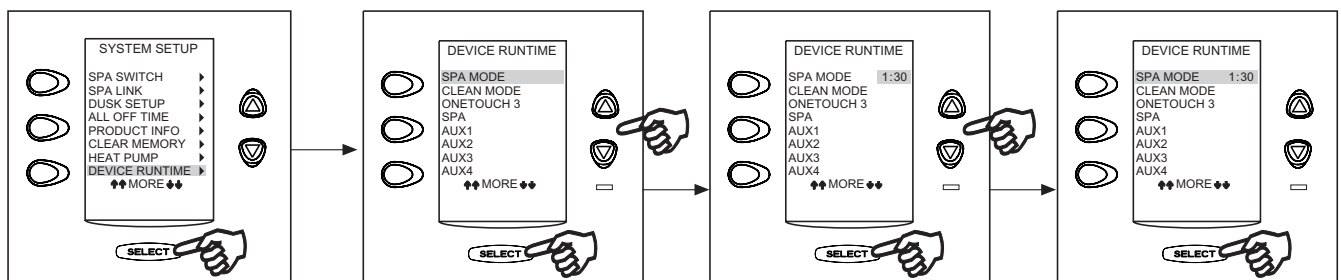


The DEVICE RUNTIME menu is used to assign a runtime for a device or auxiliary. When the device is turned on from the EQUIPMENT ON/OFF menu, it will run for the duration specified on the DEVICE RUNTIME menu.

**NOTE** A device runtime can be assigned to SPA, AUX1 - AUX32, EXTRA AUX, and macros ONETOUCH1, ONETOUCH2 and ONETOUCH3 from a minimum of 1 minute to a maximum of 2 hours.

### To set Device Runtime

Highlight MENU/HELP and press SELECT, highlight SYSTEM SETUP and press SELECT, highlight DEVICE RUNTIME and press SELECT. Use the UP/DOWN arrow keys to highlight the desired item in the list, then press SELECT. The default runtime of 30 minutes will be displayed. Use the UP/DOWN arrow keys to select the desired runtime, then press SELECT.





## Heat Pump Menu

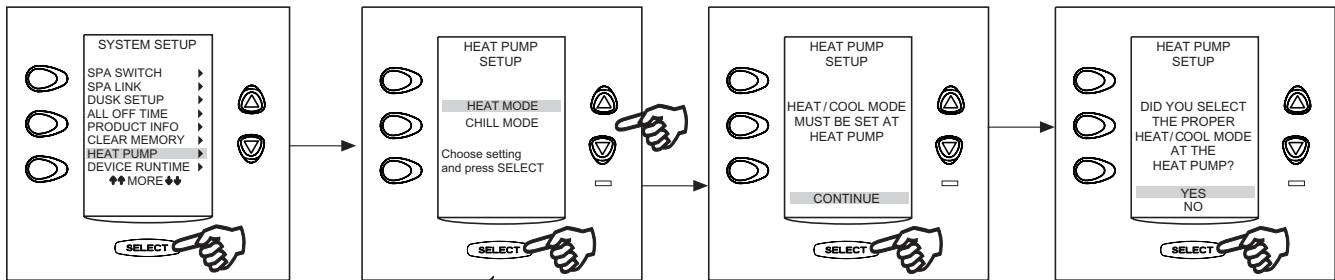

**NEW**

The HEAT PUMP SETUP menu is used to put the heat pump into the heat or chill mode. If the heat mode is selected, then HEAT PUMP will be displayed on the EQUIPMENT ON/OFF menu. If chill mode is selected then CHILLER will be displayed on the EQUIPMENT ON/OFF menu.

**NOTE** In addition to setting heat or chill mode from the Heat Pump Setup menu, the switch on the heat pump must be manually set to heat or chill.

### To set the Heat Pump

Highlight MENU/HELP and press SELECT, highlight SYSTEM SETUP and press SELECT, highlight HEAT PUMP and press SELECT. Use the UP/DOWN arrow keys to highlight either HEAT or CHILL, then press SELECT. A message will be displayed informing the user that they must walk out to the heat pump and set it to heat or chill mode as well.



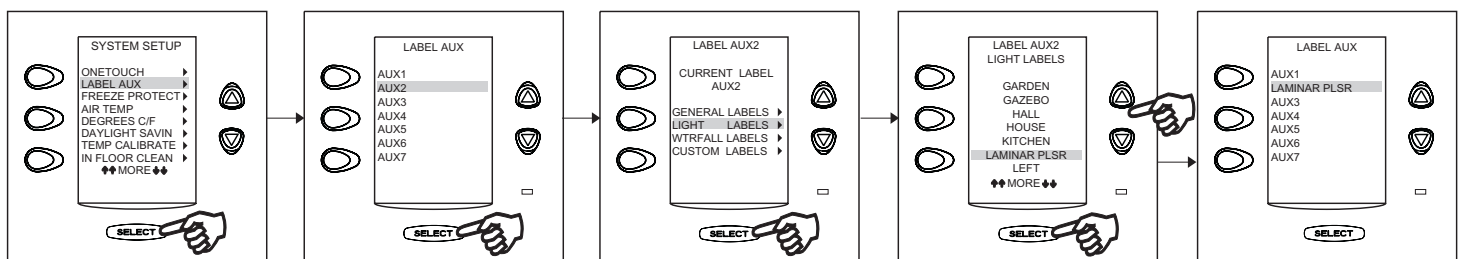
## Laminar Light Menu


**NEW**

The LAMINAR LIGHT menu is used to assign a Laminar Light to an auxiliary relay.

### To assign a Laminar Light to an AUX

Highlight MENU/HELP and press SELECT, highlight SYSTEM SETUP and press SELECT, highlight LABEL AUX and press SELECT. Use the UP/DOWN arrow keys to highlight the AUX that will be used to control the Laminar Light, then press SELECT. Highlight LIGHT LABELS and press SELECT. Use the UP/DOWN arrows and scroll down until LAMINAR PLSR is highlighted. Press SELECT.



## Section 8. Glossaries

### 8.1 Glossary of Safety Delays and Lockouts

**Lockouts** - Any device can be locked out, which will prevent those items from being turned on either by programming or manually.

**Pool/Spa Switching Filter Pump Delay** - The filter pump turns off while valves rotate between pool and spa to prevent damage to the pool equipment. The valves take 35 seconds to rotate between pool and spa; the filter pump will activate as soon as the valves have finished turning.

**Heater Cool Down Delay** - When the system is heating (water is circulating to the spa) and the Spa button is pressed, the system will remain in Spa Mode for five minutes, and will continue to circulate the water. This delay allows water to cool the heater down by circulating water through it, preventing equipment damage.

**Heater Start-up** - The heater will only come on if the water is circulating (e.g., filter pump is on and has been circulating for 15 seconds) to the corresponding body of water (e.g., spa for spa heater) and the actual water temperature is below the temperature you set with TEMP SET in the Menu. If these conditions are not met, the heater will be enabled (ready to go), but will not fire. When the heater is enabled, the LED below the DOWN button on the OneTouch Control Panel will be green. When it is firing, the LED will turn red.

**Heater "Short Cycling" Prevention** - When the heater is activated and the desired temperature is reached, heater will turn off and remain off for 3 minutes, even if the temperature falls below the desired temperature. This feature prevents heater short cycling (i.e., heater turning off and on in rapid succession).

**Cleaner Lockout** - The pool cleaner will only activate if the system is in pool mode (i.e., water circulating to pool). The pool cleaner requires that water is circulating to the pool in order for it to operate. Return to pool mode to activate the cleaner.

**Spillover Lockout** - The spillover will only activate if the system is in pool mode (i.e., water circulating to pool). The spillover requires that water is circulating to the pool in order for it to operate. Return to pool mode to activate the waterfall. Also, if the pool cleaner is on, it will turn off during spillover operation.

**Spillover** - When Dip Switch 3 is in the ON position, the Aux. 3 relay socket is activated and the return valve actuator turns. The spillover is disabled while the spa is on. A message is displayed when spillover is turned on while in spa mode (water circulation is to spa). The spillover requires that water circulation is to pool in order to operate. The spillover will activate when the system switches back to pool mode.

**Enabled** - When activated allows the function to work.

**Disabled** - When activated does not allow the function to work.

### 8.2 Glossary of Special Auxiliary Labels

**Spare AUX**- With DIP switch 6 turned **OFF**, the spare auxiliary socket is energized in "Pool Mode" and off in "Spa Mode". With DIP switch **ON**, the spare Auxiliary socket is energized in the "Spa Mode" and off in the "Pool Mode". Operates only with Pool/Spa combination units.

**Extra AUX**- System features (for example, light dimming, software labeling, and timed aux) can be assigned to the extra AUX button. Only freeze protection cannot be assigned to the extra auxiliary.

**Air Blower** - When an AUX button labeled "Air Blower" is pressed, it will turn on the air blower for 30 minutes, then automatically turn it off. An air blower may be programmed like any other auxiliary, except that you can program only the ON time. The air blower will turn on at the programmed ON time, and turn off 30 minutes later. This is to protect the blower motor from overheating during extended operation. To change the ON time from the default value of 30 minutes, refer to the *NEW* DEVICE RUNTIME feature.

**Fill Line** - When an AUX button labeled "Fill Line" is pressed, it will turn on the fill line for 30 minutes, and then automatically turn it off. A fill line may be programmed like any other auxiliary, except that you can program only the ON time. The fill line will turn on at the programmed ON time, and turn off 30 minutes later. This is to avoid overfilling the pool. Choose the appropriate number of "fill" programs during the week to keep your pool at the appropriate level. To change the ON time from the default value of 30 minutes, refer to the *NEW* DEVICE RUNTIME feature.

### 8.3 Glossary of Controller Messages

**BATTERY is LOW** - This message (located in DIAGNOSTICS under the MENU/HELP) indicates that the battery supplying power to the Power Center clock (in case of power outage) is low, and should be replaced. The battery is a standard 9V, and may be replaced by removing the battery door (marked on the Power Center - Power Center is located by the pool equipment).

**CLEANER CANNOT BE TURNED ON WHILE SPA IS ON** - This message is displayed if the pool cleaner is activated when in spa mode (i.e., water is circulating to spa). The pool cleaner requires that water be circulating to the pool in order for it to operate. Return to pool mode to activate the cleaner.

**CLEANER CANNOT BE TURNED ON WHILE SPILLOVER IS ON** - The return valve has been rotated to the spa position to give the spa spillover effect.

**FREEZE PROTECT** - This message indicates that freezing conditions have been detected by the freeze protection sensor, and that equipment assigned to freeze protection (e.g., filter pump) are active. See the section on freeze protection on page 26 of this manual for more information.

**NOTE** Only the filter pump is protected unless the optional freeze sensor is installed.) If a freeze protected Auxiliary is turned off during freeze protection, a message will be displayed indicating that item is off but will turn on in X amount of minutes. The minutes will vary depending on how long freeze mode has been active from 1 to 15 minutes.

**SENSOR OPEN** - This error message indicates that the sensor is not installed properly or is malfunctioning. Call your pool service person to resolve this problem.

**NOTE** If the message reads WATER TEMP OPEN, the heater will not fire. If message AIR TEMP OPEN is displayed, freeze protection will not operate correctly.

**POOL HEATER ENABLED** - This message indicates that the pool heater is ready to use but is not actually firing. The filter pump must be on, and the water temperature must be below the setting for the heater to fire.

**PUMP WILL REMAIN ON WHILE SPILLOVER IS ON** - This message is displayed when you attempt to turn off the filter pump while a spa spillover is on. Since the filter pump is necessary for spillover operation, the pump will remain on until the spillover is turned off.

**PUMP WILL TURN OFF AFTER COOL DOWN CYCLE** - This message indicates that the filter pump is circulating water to cool down the heater. The filter pump will continue to run for five minutes to protect the heater from damage, whenever the heater has fired and has been off for less than 5 minutes.

**PUMP WILL TURN ON AFTER DELAY** - This message is displayed during pool/spa switching. The AquaLink RS waits 35 seconds while the valves turn from pool position to spa position (or vice-versa) before activating the filter pump.

**SERVICE MODE** - This message indicates that the Controller has been locked out from the Power Center and is not operational. Service mode is used by the pool service person to aid them in servicing the pool. The Controller will not be functional until the switch at the Power Center is moved back to AUTO mode.

**SENSOR SHORT** - This error message indicates that the sensor is not installed properly or is malfunctioning. Call your pool service person to resolve this problem.

**NOTE** If the message reads WATER TEMP SHORT, the heater will not fire. If the message AIR TEMP SHORT is displayed, freeze protection will not operate correctly.

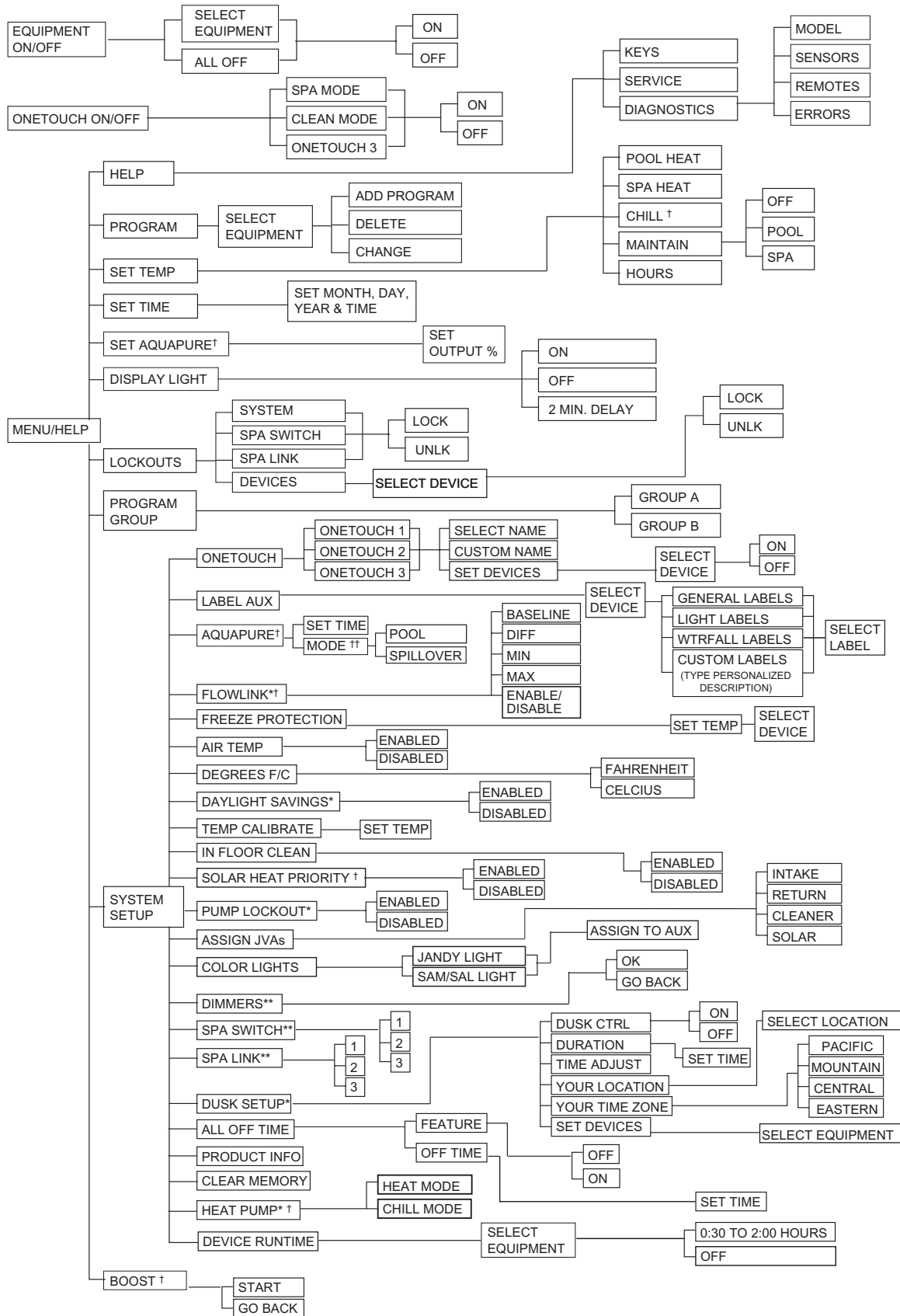
**SPA WILL TURN OFF AFTER COOL DOWN CYCLE** - When the system is in Spa Mode (water is circulating to the spa) and the Spa button is pressed to switch water circulation to the pool, the system will not switch to Pool Mode for five minutes, and will continue to circulate the water (if the heater has fired and has been off for less than five minutes). This delay allows water to cool the heater down by circulating water through it, preventing equipment damage.

**TIMED AUX ON, WILL TURN OFF AFTER 30 MINUTES** - This message indicates that a timed auxiliary (usually a blower) has been activated and will turn off after 30 minutes. Some labels (e.g., blower, fill line) have a built-in 30 minute shut off.

**TIMEOUT MODE** - This message indicates that the Controller has been locked out from the Power Center and is not operational. TIME OUT mode is used by the pool service person to aid them in servicing the pool. The Controller will not be functional for three hours, or until the switch at the Power Center is turned back to AUTO mode.

**SPILLOVER DISABLED WHILE SPA IS ON** - This message is displayed when the spa spillover is pressed while in spa mode (water circulation is to spa). The spillover requires that water circulation is to pool in order to operate. The spillover will activate when the system switches back to pool mode.

# Section 9. OneTouch Menu Flow Chart



† Items Seen Only With Optional Equipment  
 †† Mode Only Displayed When DIP Switch #3 is Set to ON  
 \* Items Seen Only In Revision "L"  
 \*\* Not Available on Export Models

---

*NOTES*

**EQUIPMENT INFORMATION RECORD**

DATE OF INSTALLATION \_\_\_\_\_

INSTALLER INFORMATION \_\_\_\_\_

INITIAL PRESSURE GAUGE READING (WITH CLEAN FILTER) \_\_\_\_\_

PUMP MODEL \_\_\_\_\_

HORSEPOWER \_\_\_\_\_

FILTER MODEL \_\_\_\_\_

SERIAL NUMBER \_\_\_\_\_

CONTROL PANEL MODEL \_\_\_\_\_

SERIAL NUMBER \_\_\_\_\_

NOTES: \_\_\_\_\_

\_\_\_\_\_

\_\_\_\_\_

## LIMITED WARRANTY

Thank you for purchasing Jandy® pool and spa products. Waterpik Technologies (manufacturer of Jandy products, including Laars® pool and spa heaters, Air Energy Heat Pumps, and Clormatic Electronic Chlorine Generators) warrants all parts to be free from manufacturing defects in materials and workmanship for a period of one year from the date of retail purchase, with the following exceptions:

- AquaLink® RS units installed with Jandy Surge Protection Kits will be covered for two years.
- NeverLube® valves are warranted for the life of pool and/or spa on which they were originally installed.
- AquaPure™ Electronic Chlorine Generator Electrolytic Cells carry a 5 year limited warranty on a prorated basis.

This warranty is limited to the first retail purchaser, is not transferable, and does not apply to products that have been moved from their original installation sites. The liability of Waterpik Technologies shall not exceed the repair or replacement of defective parts and does not include any costs for labor to remove and reinstall the defective part, transportation to or from the factory, and any other materials required to make the repair. This warranty does not cover failures or malfunctions resulting from the following:

1. Failure to properly install, operate or maintain the product(s) in accordance with our published Installation, Operation and Maintenance Manuals provided with the product(s).
2. The workmanship of any installer of the product(s).
3. Not maintaining a proper chemical balance in your pool and/or spa [pH level between 7.2 and 7.8, Total Alkalinity (TA) between 80 to 120 ppm, Total Dissolved Solids (TDS) less than 2000 not including salt ppm].
4. Abuse, alteration, accident, fire, flood, lightning, rodents, insects, negligence or acts of God.
5. Scaling, freezing, or other conditions causing inadequate water circulation.
6. Operating the product(s) at water flow rates outside the published minimum and maximum specifications.
7. Use of non-factory authorized parts or accessories in conjunction with the product(s).
8. Chemical contamination of combustion air or improper use of sanitizing chemicals, such as introducing sanitizing chemicals upstream of the heater and cleaner hose or through the skimmer.
9. Overheating; incorrect wire runs; improper electrical supply; collateral damage caused by failure of O-Rings, DE grids, or cartridge elements; or damage caused by running the pump with insufficient quantities of water.

### LIMITATION OF LIABILITY:

This is the only warranty given by Waterpik Technologies. No one is authorized to make any other warranties on Waterpik Technologies' behalf. **THIS WARRANTY IS IN LIEU OF ALL OTHER WARRANTIES, EXPRESSED OR IMPLIED, INCLUDING BUT NOT LIMITED TO ANY IMPLIED WARRANTIES OF FITNESS FOR A PARTICULAR PURPOSE AND MERCHANTABILITY. WATERPIK TECHNOLOGIES EXPRESSLY DISCLAIMS AND EXCLUDES ANY LIABILITY FOR CONSEQUENTIAL, INCIDENTAL, INDIRECT OR PUNITIVE DAMAGES FOR BREACH OF ANY EXPRESSED OR IMPLIED WARRANTY.** This warranty gives you specific legal rights. You may also have other rights which vary by state or province.

### WARRANTY CLAIMS:

For prompt warranty consideration, contact your dealer and provide the following information: proof of purchase, model number, serial number and date of installation. The installer will contact the factory for instructions regarding the claim and to determine the location of the nearest designated service center. If the dealer is not available, you can locate a service center in your area by visiting [www.jandy.com](http://www.jandy.com) or by calling our technical support department at (707) 776-8200 extension 260. All returned parts must have a Returned Material Authorization number to be evaluated under the terms of this warranty.



ETL LISTED  
CONFORMS TO  
UL STD 1563



CERTIFIED TO  
CAN/CSA C22.2 NO. 218.1

